

Disclaimer: The products listed in this catalogue have been designed, manufactured, packaged and supplied on the understanding that the purchaser has a basic understanding of what is involved with assembling and installing cabinetry. RTB Cabinets accepts no responsibility for problems encountered by the purchaser that can be attributed to a lack of cabinet assembly and installation knowledge. If you are not certain of what is involved in assembling and installing cabinets we recommend you enlist the help of someone who does or utilise the services of one of the companies listed on page 38.

Catalogue Sections: (Detailed Contents on Page 2)

- Section 1. Contains the range of floor (base) cabinets. Note: All Gloss 2 pack painted doors have a 3mm pencil edge.
- Section 2. Lists the cabinets in the LOW SERIES range which are designed for a kitchen height of 2075mm using 1930mm high cabinets.
- Section 3. Lists the cabinets in the HIGH SERIES range which are designed for a kitchen height of 2290mm using 2145mm high cabinets.
- Section 4. Lists specialty cabinets for your Kitchen and Bathroom. Chose from Wine Racks and Under bench Microwave units. Vanity Module units available to match any size wall
- Section 5. Details the options available for your bench top. Don't forget to look at the fabrication options as well. Every change of direction in the bench top needs a join and all exposed ends need to be laminated. More details on page 27.
- Section 6. Lists all the panels. Panels are used to colour coordinate the exposed sides and ends of the cabinets with the colour of your cabinet doors and drawer fronts. If you don't include them all the exposed sides and ends will be plain whiteboard showing screws. Panels fill several other necessary functions in finishing a kitchen, Bathroom, Laundry, Office or Garage Workshop. More details on pages 28 and 29.
- Section 6. Contains a list of accessories you can use to individualise your new kitchen.
- Section 7. Contains pages for you to make notes, grid pages and also has a list of companies we use and recommend. Included in this list, apart from licensed contractors, is an interior designer, if you would like decor and layout advice prior to planning your new kitchen; a cabinet assembler/installer and a general DIY handyman can help if you start to feel you might have bitten off more than you can chew.

Design Steps:

- Step 1. Accurately measure the area where you want to have your kitchen and draw an outline of the area/room on grid paper (preferably 1:20 ratio), in particular noting position of windows, doorways, drain pipes and water pipes.
- Step 2. Decide which of the 4 basic kitchen layouts you would like - 'L' shape if your area has two walls meeting in a corner; 'U' shape if your area has three walls; Galley shape if your area has two parallel walls; and finally single line if you would like to put your kitchen against one wall. If you are feeling adventurous you could also consider an island bench or a breakfast bar in conjunction with either an 'L' or 'U' shape design.
- Step 3. Decide how high you would like your high cabinets to be - LOW SERIES has a kitchen height of 2100mm using 1950mm high cabinets or HIGH SERIES which has a kitchen height of 2300mm using 2150mm high cabinets. See page 3 for standard Cabinet Heights and Depths.
- Step 4. Now start to plan where you would like your cabinets. Corners are always the hardest part of a kitchen plan. If you only have one corner, as in an 'L' shaped kitchen place the pantry there and build the rest of the kitchen out from the pantry. If you have 2 corners, place the pantry in one corner and a corner cabinet in the other corner. Then fill the gaps between with more floor (base) cabinets or drawer cabinets. Try to place tall cabinets together to minimise the number of tall end panels required (saves cost). Consider the position of the waste plumbing when planning where to have your sink and dishwasher.

Design hints:

- 1. Put at least a two door cabinet where you want your sink to be and if you are going to have your cook top on the bench top then make sure the cabinet underneath is at least as wide as the cook top.
- 2. The general rule for functionality in a kitchen is to draw a triangle between the refrigerator, the cook top and the sink. The maximum distance should be no longer than 7 metres and preferably have no obstructions in the way (like an island bench or long breakfast bar).
- Step 5. In all likelihood you will find a gap or an overlap in a row of cabinets where the standard sized cabinets don't quite fit. This is OK. Measure the width you need for the cabinet to fill the gap and we will manufacture the cabinet to fit exactly in that space. When ordering that cabinet just go to the next size up. For e.g. If you have a 585mm space order a 600mm Cabinet and put 585mm in the variable width column on your order form.
- Step 6. Once you have decided on the position of the floor (base) cabinets, select which wall cabinets you would like. For a more professional result, match the wall cabinets with the aesthetic 'lines' of the floor cabinets. This can be achieved by using wall cabinets the same width as the floor cabinets wherever possible. Ensure you choose the wall cabinets from the same section as the pantry - Low Series or High Series.

Table of Contents

Note: All Gloss 2 pack painted doors are finished with a 3mm pencil edge.

Section 1 - Generic Cabinets (for use with both HIGH and LOW series cabinets)

Floor Cabinets	4
Under bench Oven Cabinets	6
Corner Floor Cabinets and Open Shelf Units	6
2 Drawer Cabinets and Bin Drawer Cabinets	8
4 Drawer Cabinets	8
3 Drawer Cabinets	9

Section 2 - LOW Series Cabinets (1930mm overall height cabinets)

Pantry Cabinets - Standard	10
Pull out Pantry Cabinets	10
Broom Cabinets	11
Corner Pantry Cabinets	11
Pantry Door and Drawer Cabinets	11
Wall Oven Cabinets	12
Wall Oven Components including Microwave Cabinets	13
Wall Cabinets and Wall Open Shelf Units	14
Corner Wall Cabinets	15
Slide out Range hoods	16
Microwave Overhead units	16

Section 3 - HIGH Series Cabinets (2145mm overall height cabinets)

Pantry Cabinet - Standard	17
Pull out Pantry Cabinets	17
Broom Cabinets	18
Corner Pantry Cabinets	18
Wall Oven Cabinets	19
Wall Oven Components including Microwave Cabinets	20
Wall Cabinets and Wall Open Shelf Units	21
Corner Wall Cabinets	22
Slide out Range hoods	23
Microwave Overhead units	23

Section 4 - Special Cabinets

Under Bench Microwave Cabinets	24
Wine Racks	24
Vanity Units With Kicks	25
Vanity Units Without Kicks	26

Section 5 - Bench tops

Bench tops	27
Bench top Fabrication Options	27

Section 6 - Panels

End Panels and Bulkheads	28
Filler Panels	29
Bar Back Panels	29
Kick Strip Panels	29

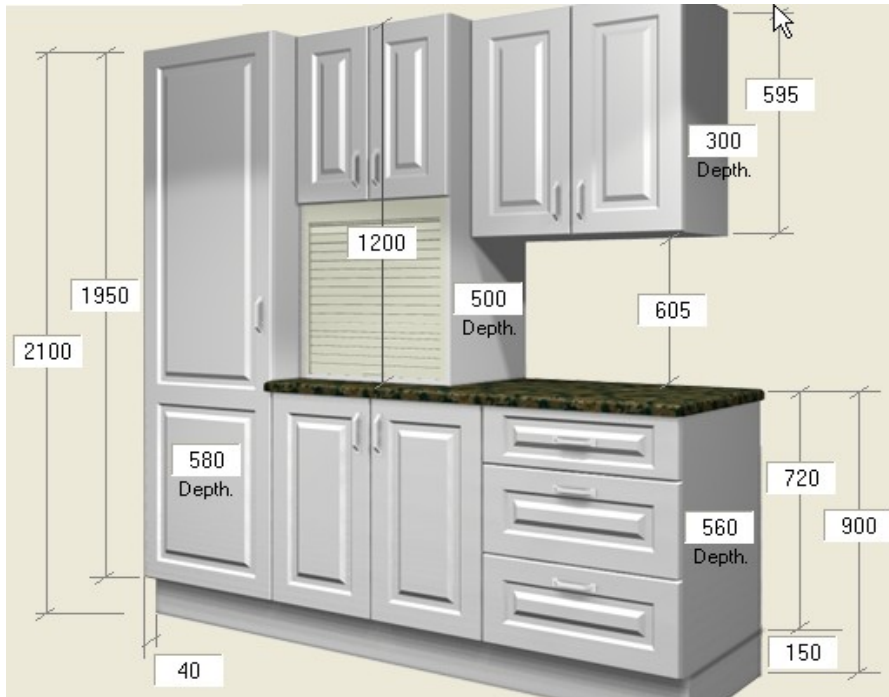
Section 7 - Accessories

Handles	30
Cabinet Accessories	31
Sinks & Sink Mixers	32
Appliances	32

Section 8 - Appendix

Colour selection chart	33
Blank pages for your notes	35
Blank grid pages for your kitchen and bench top design.	37

Low Series Cabinet Configurations



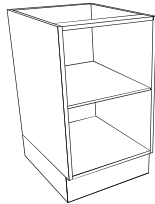
High Series Cabinet Configurations



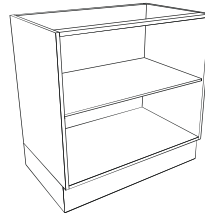
For e.g. If you have a 585mm space order a 600mm Cabinet and put 585mm in the variable width column on your order form.

Floor cabinets — Standard depth (560mm)

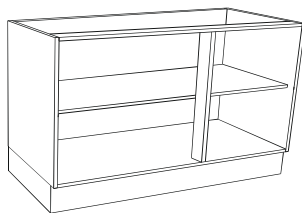
Product No.	Supplier Code	Description	Size	Doors	Price for Carcase and Hardware Only	Price commodity Texture or Woodgrain Matt doors	Price with Sheen or Woodgrain sheen or Eurograin or Finegrain door	Price with 2 pack gloss painted door	Price with Createc Gloss Door Or Stylite Gloss Door	Price with Createc Woodgrain Gloss or Abstract Gloss Door
			Height x Width x Depth (mm)							
1004030	F1-30	Standard (560mm) floor cabinet with 1 door. Nominate L or R hinge when ordering.	720 x 300 x 560	1	\$101.96	\$127.12	\$130.08	\$171.48	\$158.04	\$167.93
1004035	F1-35		720 x 350 x 560	1	\$103.42	\$129.96	\$133.41	\$179.04	\$163.52	\$174.91
1004040	F1-40		720 x 400 x 560	1	\$104.89	\$132.80	\$136.75	\$186.62	\$169.01	\$181.91
1004045	F1-45		720 x 450 x 560	1	\$106.36	\$135.63	\$140.07	\$194.19	\$174.50	\$188.89
1004050	F1-50		720 x 500 x 560	1	\$107.85	\$138.49	\$143.42	\$201.78	\$180.01	\$195.90
1004055	F1-55		720 x 550 x 560	1	\$109.32	\$141.34	\$146.76	\$209.36	\$185.51	\$202.90
1004060	F1-60		720 x 600 x 560	1	\$110.80	\$144.18	\$150.10	\$216.94	\$191.00	\$209.89
1005060	F2-60	Standard (560mm) floor cabinet with 2 doors.	720 x 600 x 560	2	\$116.40	\$166.74	\$172.66	\$240.45	\$213.56	\$233.36
1005070	F2-70		720 x 700 x 560	2	\$119.34	\$172.42	\$179.32	\$255.59	\$224.54	\$247.33
1005080	F2-80		720 x 800 x 560	2	\$122.24	\$178.05	\$185.94	\$270.69	\$235.48	\$261.26
1005090	F2-90		720 x 900 x 560	2	\$125.26	\$183.82	\$192.69	\$285.93	\$246.55	\$275.33
1005100	F2-100		720 x 1000 x 560	2	\$129.74	\$191.03	\$200.89	\$302.61	\$259.06	\$290.85
1005110	F2-110		720 x 1100 x 560	2	\$132.82	\$196.84	\$207.69	\$317.89	\$270.18	\$304.96
1005120	F2-120		720 x 1200 x 560	2	\$141.21	\$207.97	\$219.81	\$338.49	\$286.61	\$324.38
1006090	F3-90	Standard (560mm) floor cabinet with 3 doors. Door hinge options for this cabinet include LRR, LRL, LLR, RLR. Nominate hinge option when ordering.	720 x 900 x 560	3	\$132.53	\$208.04	\$216.91	\$311.10	\$270.77	\$300.46
1006105	F3-105		720 x 1050 x 560	3	\$138.62	\$218.23	\$228.59	\$335.50	\$288.92	\$323.10
1006120	F3-120		720 x 1200 x 560	3	\$143.02	\$226.74	\$238.58	\$358.20	\$305.38	\$344.06
1006135	F3-135		720 x 1350 x 560	3	\$148.97	\$236.80	\$250.12	\$382.47	\$323.39	\$366.57
1006150	F3-150		720 x 1500 x 560	3	\$153.39	\$245.32	\$260.12	\$405.19	\$339.87	\$387.54
1007096	FR2-096	Standard (560mm) return panel floor cabinet. Cabinet includes 1 door and 1 490mm return panel. Nominate L or R hinge when ordering.	720 x 960 x 560	2	\$154.31	\$214.51	\$223.98	\$324.13	\$280.42	\$311.00
1007106	FR2-106		720 x 1060 x 560	2	\$157.59	\$220.52	\$230.98	\$339.61	\$291.74	\$325.31
1007110	FR2-110	Standard (560mm) return panel floor cabinet. Cabinet includes 1 door and 1 630mm return panel. Nominate L or R hinge when ordering.	720 x 1100 x 560	2	\$160.22	\$224.25	\$235.10	\$348.35	\$297.59	\$332.36
1007120	FR2-120		720 x 1200 x 560	2	\$163.37	\$230.14	\$241.97	\$363.71	\$308.78	\$346.55
1007108	FR2-108L	Standard (560mm) return panel floor cabinet. Cabinet includes 1 door and 1 Lemans Unit . Nominate L or R hinge when ordering.	720 x 1080 x 560	2	\$650.57	\$714.05	\$724.70	\$835.64	\$786.32	\$820.50
1007113	FR2-113L		720 x 1130 x 560	2	\$672.05	\$736.90	\$748.05	\$863.23	\$811.83	\$847.50



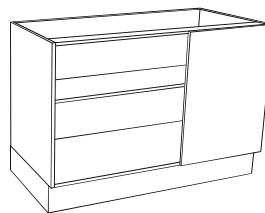
1 Door Floor Cabinet



2 Door Floor Cabinet (F2)



3 Door Floor Cabinet (F3)

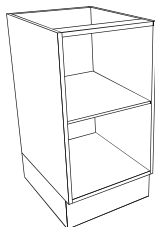


Return Panel Floor Cabinet - includes return panel (FR2) Right hinge shown

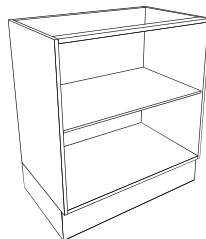
For e.g. If you have a 585mm space order a 600mm Cabinet and put 585mm in the variable width column on your order form.

Floor cabinets — Deep (640mm). Can be used with an under mount sink or a 70 litre

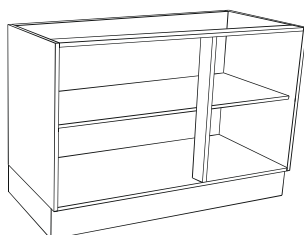
Product No.	Supplier Code	Description	Size <small>Height x Width x Depth (mm)</small>	Doors	Price for Carcase and Hardware Only	Price commodity Texture or Woodgrain Matt doors	Price with Sheen or Woodgrain sheen or Eurograin or Finegrain door	Price with 2 pack gloss painted door	Price with Createc Gloss Door Or Stylite Gloss Door	Price with Createc Woodgrain Gloss or Abstract Gloss Door
1008030	FD1-30	Deep (640mm) floor cabinet with 1 door. Nominate L or R hinge when ordering.	720 x 300 x 640	1	\$104.47	\$129.64	\$132.60	\$173.99	\$160.55	\$170.44
1008035	FD1-35		720 x 350 x 640	1	\$106.05	\$132.59	\$136.04	\$181.68	\$166.15	\$177.55
1008040	FD1-40		720 x 400 x 640	1	\$107.66	\$135.57	\$139.52	\$189.39	\$171.79	\$184.68
1008045	FD1-45		720 x 450 x 640	1	\$109.25	\$138.52	\$142.96	\$197.08	\$177.39	\$191.78
1008050	FD1-50		720 x 500 x 640	1	\$110.86	\$141.51	\$146.44	\$204.80	\$183.02	\$198.91
1008055	FD1-55		720 x 550 x 640	1	\$112.48	\$144.49	\$149.91	\$212.51	\$188.66	\$206.05
1008060	FD1-60		720 x 600 x 640	1	\$114.07	\$147.46	\$153.38	\$220.22	\$194.28	\$213.16
1009060	FD2-60	Deep (640mm) floor cabinet with 2 doors.	720 x 600 x 640	2	\$119.68	\$170.02	\$175.94	\$243.72	\$216.84	\$236.63
1009070	FD2-70		720 x 700 x 640	2	\$122.87	\$175.95	\$182.86	\$259.13	\$228.08	\$250.87
1009080	FD2-80		720 x 800 x 640	2	\$126.07	\$181.89	\$189.78	\$274.53	\$239.31	\$265.10
1009090	FD2-90		720 x 900 x 640	2	\$129.30	\$187.85	\$196.73	\$289.96	\$250.58	\$279.37
1009100	FD2-100		720 x 1000 x 640	2	\$132.22	\$193.51	\$203.38	\$305.09	\$261.55	\$293.33
1009110	FD2-110		720 x 1100 x 640	2	\$137.37	\$201.39	\$212.25	\$322.44	\$274.73	\$309.51
1009120	FD2-120		720 x 1200 x 640	2	\$140.57	\$207.33	\$219.17	\$337.85	\$285.97	\$323.75
1010090	FD3-90	Deep (640mm) floor cabinet with 3 doors. Door hinge options for this cabinet include LRR, LRL, LLR, RLR. Nominate hinge option when ordering.	720 x 900 x 640	3	\$136.56	\$212.07	\$220.95	\$315.13	\$274.80	\$304.49
1010105	FD3-105		720 x 1050 x 640	3	\$143.03	\$222.65	\$233.01	\$339.91	\$293.33	\$327.52
1010120	FD3-120		720 x 1200 x 640	3	\$147.83	\$231.55	\$243.39	\$363.02	\$310.19	\$348.87
1010135	FD3-135		720 x 1350 x 640	3	\$154.15	\$241.97	\$255.29	\$387.64	\$328.57	\$371.75
1010150	FD3-150		720 x 1500 x 640	3	\$158.94	\$250.87	\$265.67	\$410.75	\$345.43	\$393.10
1011096	FDR2-096	Deep (640mm) return panel floor cabinet. Cabinet includes 1 door and 1 490mm return panel. Nominate L or R hinge when ordering.	720 x 960 x 640	2	\$158.49	\$218.68	\$228.15	\$328.30	\$284.59	\$315.17
1011106	FDR2-106		720 x 1060 x 640	2	\$162.02	\$224.95	\$235.41	\$344.04	\$296.17	\$329.74
1011110	FDR2-110	Deep (640mm) return panel floor cabinet. Cabinet includes 1 door and 1 630mm return panel. Nominate L or R hinge when ordering.	720 x 1100 x 640	2	\$164.74	\$228.77	\$239.62	\$352.87	\$302.11	\$336.88
1011120	FDR2-120		720 x 1200 x 640	2	\$168.15	\$234.92	\$246.76	\$368.49	\$313.56	\$351.33
1011117	FDR2-117	Standard (560mm) return panel floor cabinet. Cabinet includes 1 door and 1 Lemans Unit . Nominate L or R hinge when ordering.	720 x 1170 x 640	2	\$164.74	\$230.41	\$241.86	\$358.97	\$306.93	\$343.51
1011121	FDR2-121		720 x 1210 x 640	2	\$168.15	\$235.19	\$247.13	\$368.49	\$314.36	\$352.44



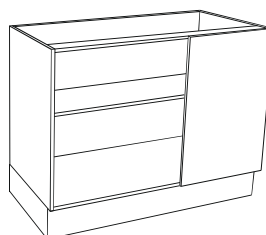
1 Door Floor Cabinet (FD1)



2 Door Floor Cabinet (FD2)



3 Door Floor Cabinet (FD3)

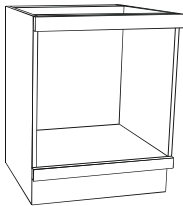


Return Panel Floor Cabinet - includes return panel (FDR2)
Right hinge shown

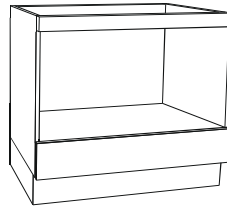
For e.g. If you have a 585mm space order a 600mm Cabinet and put 585mm in the variable width column on your order form.

Under bench Oven Cabinets

Product No.	Supplier Code	Description	Size <small>Height x Width x Depth (mm)</small>	Doors	Price for Carcase and Hardware Only	Price commodity Texture or Woodgrain Matt doors	Price with Sheen or Woodgrain sheen or Eurograin or Finegrain door	Price with 2 pack gloss painted door	Price with Createc Gloss Door Or Stylite Gloss Door	Price with Createc Woodgrain Gloss or Abstract Gloss Door
1113060	FUB2-60	Under bench oven cabinet with top and bottom pelmet.	720 x 600 x 560	2	\$100.62	\$136.52	\$137.50	\$165.53	\$156.82	\$161.35
1113070	FUB2-70		720 x 700 x 560	2	\$102.61	\$139.59	\$140.74	\$170.89	\$160.78	\$166.04
1113090	FUB2-901DM	Under bench oven cabinet with 1 drawer Metabox.	720 x 900 x 560	2	\$133.08	\$176.23	\$179.19	\$223.13	\$207.14	\$218.32
1120090	FUB2-901DT	Under bench oven cabinet with 1 drawer Triomax (soft close).	720 x 900 x 560	2	\$166.51	\$209.66	\$212.62	\$256.57	\$240.58	\$251.76



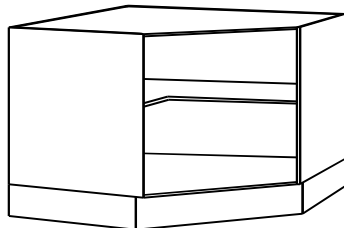
Under bench Oven Cabinet including top and bottom pelmet (FUB2)



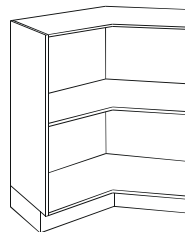
Under bench Oven Cabinet including one drawer (FUB2)

Corner Floor Cabinets (Sizes Are Fixed Not Variable)

Product No.	Supplier Code	Description	Size <small>Height x Width x Depth (mm)</small>	Doors	Price for Carcase and Hardware Only	Price commodity Texture or Woodgrain Matt doors	Price with Sheen or Woodgrain sheen or Eurograin or Finegrain door	Price with 2 pack gloss painted door	Price with Createc Gloss Door Or Stylite Gloss Door	Price with Createc Woodgrain Gloss or Abstract Gloss Door
1228909	CFD2-90	Diagonal front corner cabinet with 1 door. Nominate L or R hinge when ordering.	720 x 900^900 x 567^567	1	\$176.15	\$206.24	\$210.98	\$270.08	\$246.70	\$261.99
1226555	ACF2-5555	135° Angle corner cabinet with 1 bi-fold door. Nominate L or R hinge when ordering.	720 x 555^555 x 560^560	2	\$240.75	\$291.91	\$298.13	\$370.90	\$340.33	\$361.02



Diagonal Front Corner Cabinet (CFD2)



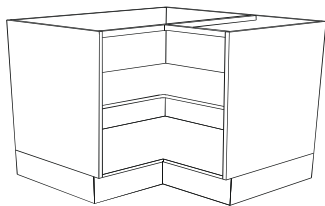
135° Angle Corner

Open Shelf Units

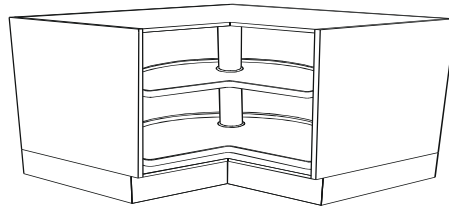
Product No.	Supplier Code	Description	Size <small>Height x Width x Depth (mm)</small>	Doors	Price commodity Texture or Woodgrain Matt doors	Price with Sheen or Woodgrain sheen or Eurograin or Finegrain door	Price with 2 pack gloss painted door	Price with Createc Gloss Door Or Stylite Gloss Door	Price with Createc Woodgrain Gloss or Abstract Gloss Door
1029030	FO-30	Open Unit with 1 shelf. Colour to match your Doors	720 x 300 x 580		\$130.79	\$190.69	\$356.07	\$277.46	\$330.50
1029040	FO-40		720 x 400 x 580		\$135.62	\$197.38	\$378.40	\$292.24	\$350.79
1029050	FO-50		720 x 500 x 580		\$140.46	\$204.06	\$400.72	\$307.02	\$371.07
1029060	FO-60		720 x 600 x 580		\$145.29	\$210.74	\$423.04	\$321.80	\$391.36

Corner Floor Cabinets (cont.) (Sizes Are Fixed Not Variable)

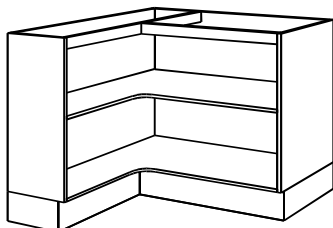
Product No.	Supplier Code	Description	Size <small>Height x Width x Depth (mm)</small>	Doors	Price for Carcase and Hardware Only	Price commodity Texture or Woodgrain Matt doors	Price with Sheen or Woodgrain sheen or Eurograin or Finegrain door	Price with 2 pack gloss painted door	Price with Createc Gloss Door Or Stylite Gloss Door	Price with Createc Woodgrain Gloss or Abstract Gloss Door
1226976	CF2-9076	Corner floor cabinet with Deep left end, standard right end and 1 bi-fold door. Nominate L or R hinge when ordering.	720 x 900^980 x 640^560	2	\$207.46	\$258.90	\$265.21	\$337.61	\$307.84	\$328.83
1226769	CF2-7690	Corner floor cabinet with Deep left end, shallow right end and 1 bi-fold door. Nominate L or R hinge when ordering.	720 x 980^900 x 560^640	2	\$207.46	\$258.90	\$265.21	\$337.61	\$307.84	\$328.83
1226909	CF2-90	Standard corner floor cabinet with 1 bi-fold door. Nominate L or R hinge when ordering.	720 x 900^900 x 560^560	2	\$202.96	\$254.39	\$260.71	\$333.11	\$303.33	\$324.33
1227909	CF2-90L	Corner floor cabinet for lazy Suzan. Nominate L or R hinge when ordering. Lazy Suzan fittings are INCLUDED with cabinet.	720 x 900^900 x 560^560	2	\$319.33	\$370.77	\$377.08	\$449.48	\$419.71	\$440.70
1226129	CF3-12090	Corner floor cabinet with extended left end. This cabinet has a bi-fold door hinged from the short side and a single door hinged from the long side.	720 x 1200^900 x 560^560	3	\$230.56	\$307.16	\$316.44	\$418.29	\$372.02	\$402.91
1226912	CF3-90120	Corner floor cabinet with extended right end. This cabinet has a bi-fold door hinged from the short side and a single door hinged from the long side.	720 x 900^1200 x 560^560	3	\$230.56	\$307.16	\$316.44	\$418.29	\$372.02	\$402.91
1226159	CF3-15090	Corner floor cabinet with extended left end. This cabinet has a bi-fold door hinged from the short side and a single door hinged from the long side.	720 x 1500^900 x 560^560	3	\$261.01	\$345.83	\$358.06	\$485.35	\$426.59	\$466.47
1226915	CF3-90150	Corner floor cabinet with extended right end. This cabinet has a bi-fold door hinged from the short side and a single door hinged from the long side.	720 x 900^1500 x 560^560	3	\$261.01	\$345.83	\$358.06	\$485.35	\$426.59	\$466.47



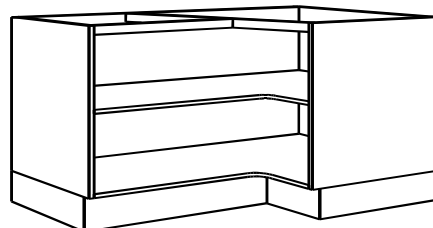
Standard Corner Floor Cabinet (CF2)



Corner Floor Cabinet for lazy-Suzan (CF2)



Corner Floor Cabinet with Standard left end, Deep



Corner Floor Cabinet with extended left end (CF3)

For e.g. If you have a 585mm space order a 600mm Cabinet and put 585mm in the variable width column on your order form.

2 Drawer Cabinets Standard Depth (560mm)

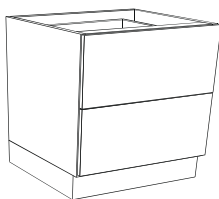
Product No.	Supplier Code	Description	Size <small>Height x Width x Depth (mm)</small>	Drawers	Price for Carcase and Hardware Only	Price commodity Texture or Woodgrain Matt doors	Price with Sheen or Woodgrain sheen or Eurograin or Finegrain door	Price with 2 pack gloss painted door	Price with Createc Gloss Door Or Stylite Gloss Door	Price with Createc Woodgrain Gloss or Abstract Gloss Door
1321060	F-2D-60M	Standard depth (560mm) cabinet, 2 equal drawers	720 x 600 x 560	2	\$192.55	\$242.48	\$248.40	\$318.56	\$289.30	\$308.94
1321070	F-2D-70M	Metabox	720 x 700 x 560	2	\$196.97	\$249.97	\$256.88	\$336.05	\$302.10	\$324.86
1321080	F-2D-80M	(2 x 357mm high drawer fronts).	720 x 800 x 560	2	\$201.40	\$257.48	\$265.38	\$353.56	\$314.91	\$340.80
1321090	F-2D-90M		720 x 900 x 560	2	\$205.81	\$264.98	\$273.86	\$371.06	\$327.71	\$356.72
1373060	F-2D-60T	Standard depth (560mm) cabinet, 2 equal drawers (soft close)	720 x 600 x 560	2	\$264.24	\$314.17	\$320.09	\$390.25	\$360.99	\$380.63
1373070	F-2D-70T		720 x 700 x 560	2	\$268.63	\$321.63	\$328.54	\$407.71	\$373.76	\$396.52
1373080	F-2D-80T	(2 x 357mm high drawer fronts).	720 x 800 x 560	2	\$273.03	\$329.11	\$337.01	\$425.19	\$386.54	\$412.43
1373090	F-2D-90T		720 x 900 x 560	2	\$275.02	\$334.19	\$343.07	\$440.27	\$396.92	\$425.93

4 Drawer Cabinets - Standard depth (560mm)

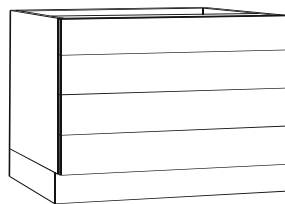
1324040	F-4D-40M	Standard depth (560mm) cabinet, 4 equal drawers	720 x 400 x 560	4	\$204.86	\$280.36	\$284.31	\$340.93	\$316.57	\$330.98
1324045	F-4D-45M	Metabox	720 x 450 x 560	4	\$207.87	\$285.25	\$289.69	\$351.36	\$324.12	\$340.21
1324050	F-4D-50M	(4 x 177mm high drawer fronts).	720 x 500 x 560	4	\$210.95	\$290.21	\$295.14	\$361.85	\$331.73	\$349.51
1324055	F-4D-55M		720 x 550 x 560	4	\$213.99	\$295.14	\$300.56	\$372.31	\$339.31	\$358.77
1324060	F-4D-60M		720 x 600 x 560	4	\$217.01	\$300.03	\$305.95	\$382.74	\$346.85	\$368.00
1333060	F-4DCT-60M	Standard depth (560mm) cabinet as 4D with 450mm top drawer Metabox and end cutouts for use with cook top.	720 x 600 x 560	4	\$215.49	\$298.51	\$304.43	\$381.22	\$345.33	\$366.49
1376040	F-4D-40T	Standard depth (560mm) cabinet, 4 equal drawers (Soft Close)	720 x 400 x 560	4	\$331.35	\$406.86	\$410.80	\$467.43	\$443.07	\$457.47
1376045	F-4D-45T		720 x 450 x 560	4	\$334.28	\$411.66	\$416.10	\$477.77	\$450.53	\$466.62
1376050	F-4D-50T	(4 x 177mm high drawer fronts).	720 x 500 x 560	4	\$337.18	\$416.45	\$421.38	\$488.09	\$457.97	\$475.74
1376055	F-4D-55T		720 x 550 x 560	4	\$340.17	\$421.31	\$426.74	\$498.49	\$465.48	\$484.95
1376060	F-4D-60T		720 x 600 x 560	4	\$343.09	\$426.12	\$432.04	\$508.83	\$472.94	\$494.09
1331060	F-4DCT-60T	Standard depth (560mm) cabinet as 4D with 450mm top drawer (Soft Close) and end cutouts for use with cook top.	720 x 600 x 560	4	\$358.23	\$441.25	\$447.17	\$523.96	\$488.07	\$509.23

Bin Drawer Cabinets - Standard Depth (560mm)

1367045	F-1D-45B	Standard depth (560mm) cabinet, 1 drawer (soft close)	720 x 450 x 560	1	\$620.84	\$650.11	\$654.55	\$708.67	\$688.98	\$703.37
1367050	F-1D-50B	(2 x 32 Litre Bins).	720 x 500 x 560	1	\$622.33	\$652.97	\$657.91	\$716.27	\$694.49	\$710.38
1367145	F-1D-45WB	Standard depth (560mm) cabinet, 1 drawer (2 x 20 Litre Bins). Economy type	720 x 450 x 560	2	\$160.54	\$205.85	\$210.29	\$266.93	\$244.72	\$259.68



2 Drawer Cabinet (FS-2D & F-2D)

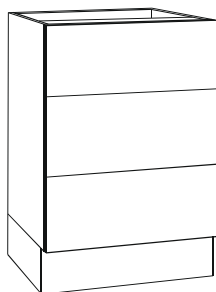


4 Drawer Cabinet (FS-4D & F-4D)

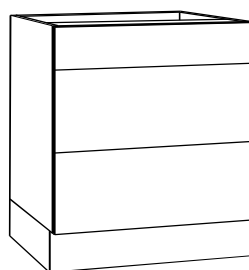
For e.g. If you have a 585mm space order a 600mm Cabinet and put 585mm in the variable width column on your order form.

3 Drawer Cabinets

Product No.	Supplier Code	Description	Size <small>Height x Width x Depth (mm)</small>	Drawers	Price for Carcase and Hardware Only	Price commodity Texture or Woodgrain Matt doors	Price with Sheen or Woodgrain sheen or Eurograin or Finegrain	Price with 2 pack gloss painted door	Price with Createc Gloss Door Or Stylite Gloss Door	Price with Createc Woodgrain Gloss or Abstract Gloss Door
1322050	F-3ED-50M	Standard depth (560mm)	720 x 500 x 560	3	\$200.49	\$263.55	\$268.48	\$330.27	\$305.07	\$322.22
1322060	F-3ED-60M	cabinet, 3 equal drawers	720 x 600 x 560	3	\$205.06	\$271.54	\$277.46	\$348.38	\$318.36	\$338.75
1322070	F-3ED-70M	Metabox	720 x 700 x 560	3	\$210.33	\$280.22	\$287.13	\$367.20	\$332.35	\$355.99
1322080	F-3ED-80M	(3 x 237mm high drawer fronts).	720 x 800 x 560	3	\$210.75	\$284.07	\$291.96	\$381.18	\$341.50	\$368.39
1322090	F-3ED-90M		720 x 900 x 560	3	\$220.89	\$297.63	\$306.51	\$404.87	\$360.36	\$390.50
1323050	F-3UD-50M	Standard depth (560mm)	720 x 500 x 560	3	\$194.74	\$257.61	\$262.49	\$324.51	\$298.80	\$315.76
1323060	F-3UD-60M	cabinet, 3 unequal drawers	720 x 600 x 560	3	\$199.31	\$265.57	\$271.42	\$342.63	\$312.00	\$332.17
1323070	F-3UD-70M	Metabox	720 x 700 x 560	3	\$204.48	\$274.14	\$280.96	\$361.36	\$325.80	\$349.18
1323080	F-3UD-80M	(1 x 177mm, 2 x 267mm high drawer fronts).	720 x 800 x 560	3	\$209.67	\$282.72	\$290.51	\$380.10	\$339.62	\$366.21
1323090	F-3UD-90M		720 x 900 x 560	3	\$214.83	\$291.27	\$300.04	\$398.81	\$353.41	\$383.22
1374050	F-3ED-50T	Standard depth (560mm)	720 x 500 x 560	3	\$306.10	\$369.16	\$374.09	\$435.88	\$410.68	\$427.83
1374060	F-3ED-60T	cabinet, 3 equal drawers	720 x 600 x 560	3	\$310.67	\$377.15	\$383.07	\$454.00	\$423.97	\$444.37
1374070	F-3ED-70T	(Soft Close)	720 x 700 x 560	3	\$315.86	\$385.76	\$392.67	\$472.74	\$437.89	\$461.53
1374080	F-3ED-80T	(3 x 237mm high drawer fronts).	720 x 800 x 560	3	\$321.06	\$394.37	\$402.27	\$491.48	\$451.80	\$478.70
1374090	F-3ED-90T		720 x 900 x 560	3	\$326.29	\$403.03	\$411.91	\$510.27	\$465.76	\$495.90
1375050	F-3UD-50T	Standard depth (560mm)	720 x 500 x 560	3	\$314.58	\$377.46	\$382.33	\$444.35	\$418.64	\$435.60
1375060	F-3UD-60T	cabinet, 3 unequal drawers	720 x 600 x 560	3	\$319.15	\$385.41	\$391.26	\$462.47	\$431.84	\$452.01
1375070	F-3UD-70T	(Soft Close)	720 x 700 x 560	3	\$324.45	\$394.10	\$400.92	\$481.32	\$445.76	\$469.15
1375080	F-3UD-80T	(1 x 177mm, 2 x 267mm high drawer fronts).	720 x 800 x 560	3	\$329.74	\$402.79	\$410.59	\$500.17	\$459.69	\$486.28
1375090	F-3UD-90T		720 x 900 x 560	3	\$335.10	\$411.54	\$420.31	\$519.08	\$473.68	\$503.48
1332060	F-3UDCT-60M	Standard depth (560mm)	720 x 600 x 560	3	\$197.76	\$264.02	\$269.87	\$341.08	\$310.45	\$330.62
1332070	F-3UDCT-70M	cabinet as 3UD with 450mm	720 x 700 x 560	3	\$202.80	\$272.45	\$279.27	\$359.67	\$324.11	\$347.50
1332080	F-3UDCT-80M	top drawer Metabox and end cut-outs for use with cook top.	720 x 800 x 560	3	\$207.87	\$280.91	\$288.71	\$378.29	\$337.81	\$364.41
1332090	F-3UDCT-90M		720 x 900 x 560	3	\$212.89	\$289.33	\$298.10	\$396.86	\$351.46	\$381.27
1330060	F-3UDCT-60T	Standard depth (560mm)	720 x 600 x 560	3	\$317.49	\$383.76	\$389.60	\$460.82	\$430.18	\$450.35
1330070	F-3UDCT-70T	cabinet as 3UD with 450mm	720 x 700 x 560	3	\$322.65	\$392.31	\$399.13	\$479.53	\$443.97	\$467.35
1330080	F-3UDCT-80T	top drawer (Soft Close) and end cut-outs for use with cook top.	720 x 800 x 560	3	\$327.81	\$400.86	\$408.65	\$498.24	\$457.76	\$484.35
1330090	F-3UDCT-90T		720 x 900 x 560	3	\$333.05	\$409.49	\$418.26	\$517.03	\$471.62	\$501.43



3 Drawer Cabinet
Equal drawers
(F-3ED)

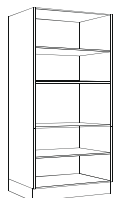


3 Drawer Cabinet
Unequal drawers
(F-3UD)

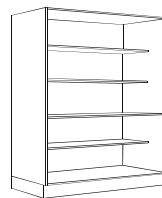
For e.g. If you have a 585mm space order a 600mm Cabinet and put 585mm in the variable width column on your order form.

Pantry Cabinets - LOW Series - Standard depth (590mm)

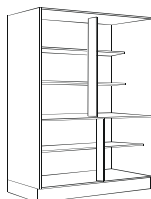
Product No.	Supplier Code	Description	Size <small>Height x Width x Depth (mm)</small>	Doors	Price for Carcase and Hardware Only	Price commodity Texture or Woodgrain Matt doors	Price with Sheen or Woodgrain sheen or Eurograin or Finegrain door	Price with 2 pack gloss painted door	Price with Createc Gloss Door Or Stylite Gloss Door	Price with Createc Woodgrain Gloss or Abstract Gloss Door
1412030	PPOL1-30	Cabinet for pull out pantry with 300mm baskets. Pull out pantry fittings are NOT INCLUDED with cabinet. See accessories list on page 31 to order.	1950 x 300 x 590	1	\$167.79	\$209.44	\$217.45	\$302.56	\$267.53	\$293.69
1412040	PPOL1-40	Cabinet for pull out pantry with 400mm baskets. Pull out pantry fittings are NOT INCLUDED with cabinet. See accessories list on page 31 to order.	1950 x 400 x 590	1	\$174.20	\$222.68	\$233.37	\$341.01	\$295.13	\$329.19
1404030	PL1-30	Includes 1 horizontal partition, 1 adjustable shelf in bottom section and 2 adjustable shelves in top section. Nominate L or R hinge when ordering.	1950 x 300 x 590	1	\$194.31	\$235.96	\$243.97	\$329.08	\$294.05	\$320.21
1404040	PL1-40		1950 x 400 x 590	1	\$205.16	\$253.64	\$264.32	\$371.96	\$326.09	\$360.15
1404050	PL1-50		1950 x 500 x 590	1	\$216.00	\$271.31	\$284.67	\$414.84	\$358.13	\$400.09
1404060	PL1-60		1950 x 600 x 590	1	\$226.91	\$289.05	\$305.08	\$457.78	\$390.23	\$440.09
1405070	PL2-70	Includes 1 horizontal partition, 1 adjustable shelf in bottom section and 2 adjustable shelves in top section.	1950 x 700 x 590	2	\$252.32	\$342.45	\$361.15	\$538.89	\$457.99	\$518.21
1405080	PL2-80		1950 x 800 x 590	2	\$263.17	\$360.13	\$381.50	\$581.78	\$490.03	\$558.15
1405090	PL2-90		1950 x 900 x 590	2	\$274.13	\$377.92	\$401.97	\$624.78	\$522.19	\$598.22
1405100	PL2-100		1950 x 1000 x 590	2	\$287.00	\$397.62	\$424.34	\$669.68	\$556.25	\$640.18
1405110	PL2-110	Centre stile, deep bottom adjustable shelf, shelves in top section 440mm deep.	1950 x 1100 x 590	2	\$295.17	\$412.62	\$442.01	\$709.89	\$585.62	\$677.45
1405120	PL2-120		1950 x 1200 x 590	2	\$305.76	\$430.04	\$462.10	\$752.51	\$617.40	\$717.13
1407109	PRL1-109	Return panel pantry. All L-shaped adjustable shelves. Cabinet includes 1 door and 1 490mm return panel. Nominate L or R hinge when ordering.	1950 x 1090 x 590	2	\$302.20	\$418.96	\$448.09	\$716.91	\$590.53	\$681.56
1407123	PRL1-123	Return panel pantry. All L-shaped adjustable shelves. Cabinet includes 1 door and 1 630mm return panel. Nominate L or R hinge when ordering.	1950 x 1230 x 590	2	\$323.20	\$449.53	\$482.39	\$785.97	\$641.20	\$743.30



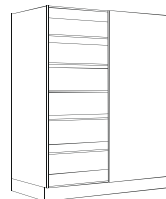
1 Door Pantry Cabinet (PL1)



2 Door Pantry Cabinet (PL2)



2 Door Pantry Cabinet with centre stile & 440mm deep shelves (PL2)



Return Panel Pantry - includes return panel (PRL1)

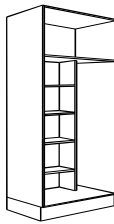
For e.g. If you have a 585mm space order a 600mm Cabinet and put 585mm in the variable width column on your order form.

Broom Cabinets - LOW Series

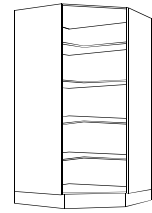
Product No.	Supplier Code	Description	Size <small>Height x Width x Depth (mm)</small>	Doors	Price for Carcase and Hardware Only	Price commodity Texture or Woodgrain Matt doors	Price with Sheen or Woodgrain sheen or Eurograin or Finegrain door	Price with 2 pack gloss painted door	Price with Createc Gloss Door Or Stylite Gloss Door	Price with Createc Woodgrain Gloss or Abstract Gloss Door
1642030	BL1-30	1 horizontal partition at 1600mm from bottom, 4 shallow adjustable shelves. Nominate L or R hinge when placing order.	1950 x 300 x 590	1	\$190.71	\$232.36	\$240.37	\$325.48	\$290.45	\$316.61
1642040	BL1-40		1950 x 400 x 590	1	\$200.15	\$248.63	\$259.32	\$366.95	\$321.08	\$355.14
1642050	BL1-50		1950 x 500 x 590	1	\$209.57	\$264.88	\$278.24	\$408.41	\$351.70	\$393.66
1642060	BL1-60		1950 x 600 x 590	1	\$219.05	\$281.19	\$297.22	\$449.93	\$382.37	\$432.24
1634060	BIBL1-60	As above, with 150mm wide ironing board division on opposite side to hinges. Nominate L or R hinge when ordering.	1950 x 600 x 590	1	\$231.86	\$294.00	\$310.03	\$462.73	\$395.18	\$445.04



Standard Broom Cabinet (BL1)



Broom Cabinet with ironing board division (BIBL1)



Corner Pantry Cabinet (CPL1)

Corner Pantry Cabinet - LOW Series (Sizes are Fixed Not Variable)

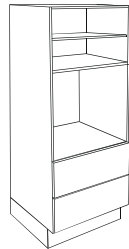
Product No.	Supplier Code	Description	Size <small>Height x Width x Depth (mm)</small>	Doors	Price for Carcase and Hardware Only	Price commodity Texture or Woodgrain Matt doors	Price with Sheen or Woodgrain sheen or Eurograin or Finegrain door	Price with 2 pack gloss painted door	Price with Createc Gloss Door Or Stylite Gloss Door	Price with Createc Woodgrain Gloss or Abstract Gloss Door
1742101	CPL1-100	All L-shaped adjustable shelves. Nominate L or R hinge when ordering.	1950 x 1000^1000 x 597^597	1	\$462.90	\$520.94	\$535.37	\$677.76	\$613.51	\$658.63

Pantry Cabinet - LOW Series with 3 Unequal Drawers Under

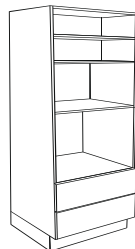
Product No.	Supplier Code	Description	Size <small>Height x Width x Depth (mm)</small>	Doors	Price for Carcase and Hardware Only	Price commodity Texture or Woodgrain Matt doors	Price with Sheen or Woodgrain sheen or Eurograin or Finegrain door	Price with 2 pack gloss painted door	Price with Createc Gloss Door Or Stylite Gloss Door	Price with Createc Woodgrain Gloss or Abstract Gloss Door
2723060	P3DL-60	Pantry with 2 Drawers above and 3 Unequal Drawers Below. (1 x 177mm, 2 x 267mm high drawer fronts). (Metal Sides)	1950 x 600 x 590	5	\$371.58	\$501.53	\$517.40	\$677.21	\$601.83	\$654.98
2723070	P3DL-70		1950 x 700 x 590	5	\$382.84	\$520.59	\$539.10	\$722.32	\$635.10	\$696.45
2723080	P3DL-80		1950 x 800 x 590	5	\$394.15	\$539.69	\$560.84	\$767.49	\$668.42	\$737.97
2723090	P3DL-90		1950 x 900 x 590	5	\$405.51	\$558.83	\$582.63	\$812.69	\$701.78	\$779.53
2823060	P3DH-60	Pantry with 2 Drawers above and 3 Unequal Drawers Below. (1 x 177mm, 2 x 267mm high drawer fronts). (Soft Close)	1950 x 600 x 590	5	\$472.76	\$608.47	\$626.11	\$802.35	\$718.27	\$777.11
2823070	P3DH-70		1950 x 700 x 590	5	\$484.02	\$628.24	\$648.82	\$851.11	\$753.84	\$821.73
2823080	P3DH-80		1950 x 800 x 590	5	\$495.33	\$648.06	\$671.57	\$899.92	\$789.46	\$866.41
2823090	P3DH-90		1950 x 900 x 590	5	\$506.69	\$667.92	\$694.37	\$948.77	\$825.12	\$911.12

For e.g. If you have a 585mm space order a 600mm Cabinet and put 585mm in the variable width column on your order form.

Product No.	Supplier Code	Description	Size Height x Width x Depth (mm)	Drawers and Doors	Price for Carcase and Hardware Only	Price commodity Texture or Woodgrain Matt doors	Price with Sheen or Woodgrain sheen or Eurograin or Finegrain door	Price with 2 pack gloss painted door	Price with Createc Gloss Door Or Stylite Gloss Door	Price with Createc Woodgrain Gloss or Abstract Gloss Door
1838060	WOL2-60M	This is a full cabinet for ovens with no microwave space above. Please nominate oven height and width when placing order. Cabinet may not be suitable for gas ovens.	1950 x 600 x 590	4	\$277.86	\$368.16	\$376.71	\$468.81	\$429.12	\$458.26
1838070	WOL2-70M		1950 x 700 x 590	4	\$287.73	\$382.52	\$392.49	\$497.09	\$451.14	\$484.80
1879060	WOL2-60T		1950 x 600 x 590	4	\$369.38	\$459.68	\$468.23	\$560.34	\$520.65	\$549.78
1879070	WOL2-70T		1950 x 700 x 590	4	\$379.20	\$473.98	\$483.96	\$588.56	\$542.61	\$576.27
1840060	WOML2-60M	This cabinet is as above, but includes a section for a microwave. Please note the microwave section will be white. If you would like the microwave section to be made from the same material as the doors, please choose a combination from the cabinets on the next page. Please nominate oven height and width when placing order. Cabinet may not be suitable for gas ovens. Please check with us if you are planning to use this cabinet for a gas oven.	1950 x 600 x 590	4	\$292.23	\$379.58	\$387.23	\$472.53	\$435.68	\$461.91
1840070	WOML2-70M		1950 x 700 x 590	4	\$304.06	\$395.53	\$404.46	\$501.15	\$458.49	\$488.80
1881060	WOML2-60T		1950 x 600 x 590	4	\$383.75	\$471.10	\$478.75	\$564.05	\$527.21	\$553.43
1881070	WOML2-70T		1950 x 700 x 590	4	\$395.53	\$487.00	\$495.92	\$592.62	\$549.95	\$580.27



Wall Oven Cabinet (WOL2)



Wall Oven Cabinet including microwave section (WOML2)

Last letter M is for Metabox drawers
Last letter T is for Triomax drawers (soft close)

For e.g. If you have a 585mm space order a 600mm Cabinet and put 585mm in the variable width column on your order form.

Wall Oven Base, Microwave Box and Upper Oven Cabinets - LOW Series

Product No.	Supplier Code	Description	Size <small>Height x Width x Depth (mm)</small>	Drawers and Doors	Price for Carcase and Hardware Only	Price commodity Texture or Woodgrain Matt doors	Price with Sheen or Woodgrain sheen or Eurograin or Finegrain door	Price with 2 pack gloss painted door	Price with Createc Gloss Door Or Stylite Gloss Door	Price with Createc Woodgrain Gloss or Abstract Gloss Door
1915060	WOB2-60M	Wall Oven Base, 2 Drawers Metabox	XXX x 600 x 590	2	\$221.33	\$266.11	\$270.23	\$321.88	\$303.21	\$317.31
1915070	WOB2-70M	Wall Oven Base, 2 Drawers Metabox	XXX x 700 x 590	2	\$227.78	\$274.91	\$279.71	\$337.36	\$315.69	\$332.04
1967060	WOB2-60T	Wall Oven Base, 2 Drawers Triomax	XXX x 600 x 590	2	\$312.85	\$357.64	\$361.75	\$413.40	\$394.74	\$408.84
1967070	WOB2-70T	Wall Oven Base, 2 Drawers Triomax	XXX x 700 x 590	2	\$319.29	\$366.42	\$371.21	\$428.87	\$407.20	\$423.55
1914060	MWBWO-60	Wall Oven Microwave Box	400 x 600 x 500			\$113.06	\$169.79	\$301.65	\$242.65	\$285.36
1914070	MWBWO-70	Wall Oven Microwave Box	400 x 700 x 500			\$116.73	\$174.83	\$318.31	\$253.68	\$300.51
1943060	WOUXL2-60	Wall Oven Upper, 2 Doors	XXX x 600 x 360	2	\$112.35	\$155.19	\$158.81	\$207.11	\$189.64	\$202.03
1943070	WOUXL2-70	Wall Oven Upper, 2 Doors	XXX x 700 x 360	2	\$115.50	\$160.14	\$164.36	\$218.01	\$197.83	\$212.10

Choose 1 x Wall Oven Base, 1 x Microwave Box and 1 x Wall Oven Upper Cabinet to make a wall oven with matching colour microwave section (colour will match door material).

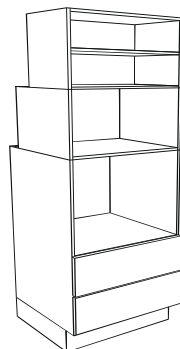
Please nominate oven height and width.

(Wall Oven Upper cabinet height will be adjusted at no extra charge to suit your oven height)

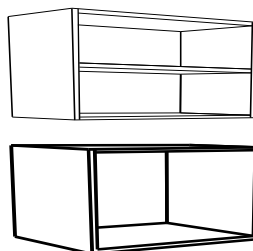
This cabinet may not be suitable for gas ovens. Please call us for more information.

Microwave Box and Wall Cabinets - LOW Series

Product No.	Supplier Code	Description	Size <small>Height x Width x Depth (mm)</small>	Drawers and Doors	Price for Carcase and Hardware Only	Price commodity Texture or Woodgrain Matt doors	Price with Sheen or Woodgrain sheen or Eurograin or Finegrain door	Price with 2 pack gloss painted door	Price with Createc Gloss Door Or Stylite Gloss Door	Price with Createc Woodgrain Gloss or Abstract Gloss Door
2214060	MWB-60	Wall Microwave Box	400 x 600 x 470			\$121.17	\$180.74	\$339.73	\$266.05	\$317.48
2214070	MWB-70	Wall Microwave Box	400 x 700 x 470			\$126.20	\$187.70	\$363.27	\$281.47	\$338.65
2264060	WMWL2-60	Wall Microwave Upper, 2 Doors	425 x 600 x 360	2	\$101.67	\$144.10	\$147.60	\$193.76	\$177.88	\$189.88
2264070	WMWL2-70	Wall Microwave Upper, 2 Doors	425 x 700 x 360	2	\$104.07	\$148.26	\$152.34	\$203.51	\$185.18	\$198.99



Wall Oven Base Cabinet (WOB2) with Microwave Box (MWBWO) and Upper Cabinet (WOUXL2)



Wall Microwave Upper Cabinet (WMWL2)

Wall Microwave Box (MWB)

Note: Due to design features, the wall microwave box and wall microwave upper cabinet have to be purchased together.

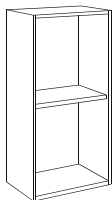
For e.g. If you have a 585mm space order a 600mm Cabinet and put 585mm in the variable width column on your order form.

Wall Cabinets - LOW Series - Medium (605mm tile height)

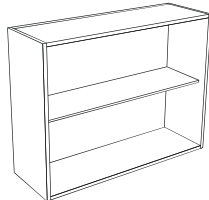
Product No.	Supplier Code	Description	Size <small>Height x Width x Depth (mm)</small>	Doors	Price for Carcase and Hardware Only	Price commodity Texture or Woodgrain Matt doors	Price with Sheen or Woodgrain sheen or Eurograin or Finegrain door	Price with 2 pack gloss painted door	Price with Createc Gloss Door Or Stylite Gloss Door	Price with Createc Woodgrain Gloss or Abstract Gloss Door
2245030	WML1-30	Wall cabinets medium (607mm tile height), Low Series. Nominate L or R hinge when ordering.	595 x 300 x 300	1	\$87.25	\$110.74	\$113.19	\$150.11	\$138.89	\$147.14
2245035	WML1-35		595 x 350 x 300	1	\$88.42	\$113.08	\$115.93	\$156.38	\$143.42	\$152.91
2245040	WML1-40		595 x 400 x 300	1	\$89.59	\$115.41	\$118.67	\$162.64	\$147.94	\$158.68
2245045	WML1-45		595 x 450 x 300	1	\$90.75	\$117.73	\$121.40	\$168.89	\$152.45	\$164.44
2245050	WML1-50		595 x 500 x 300	1	\$91.92	\$120.06	\$124.14	\$175.15	\$156.97	\$170.21
2245055	WML1-55		595 x 550 x 300	1	\$93.12	\$122.42	\$126.91	\$181.45	\$161.53	\$176.02
2245060	WML1-60	595 x 600 x 300	1	\$94.30	\$124.76	\$129.65	\$187.71	\$166.05	\$181.79	
2246060	WML2-60	Wall cabinets medium (607mm tile height), Low Series with 2 doors.	595 x 600 x 300	2	\$99.90	\$146.89	\$151.78	\$210.63	\$188.19	\$204.67
2246070	WML2-70		595 x 700 x 300	2	\$101.96	\$151.27	\$156.97	\$222.87	\$196.95	\$215.93
2246080	WML2-80		595 x 800 x 300	2	\$104.57	\$156.21	\$162.73	\$235.67	\$206.27	\$227.75
2246090	WML2-90		595 x 900 x 300	2	\$106.93	\$160.89	\$168.23	\$248.21	\$215.33	\$239.32
2246100	WML2-100		595 x 1000 x 300	2	\$109.31	\$165.58	\$173.74	\$260.77	\$224.41	\$250.89
2246110	WML2-110		595 x 1100 x 300	2	\$111.64	\$170.23	\$179.20	\$273.28	\$233.45	\$262.43
2246120	WML2-120	595 x 1200 x 300	2	\$113.98	\$174.90	\$184.68	\$285.81	\$242.49	\$273.97	
2247090	WML3-90	Wall cabinets medium (607mm tile height), Low Series with 3 doors. Door hinge options for this cabinet include LRR, LRL, LLR, RLR. Nominate hinge option when ordering.	595 x 900 x 300	3	\$113.97	\$184.45	\$191.79	\$272.57	\$238.90	\$263.63
2247105	WML3-105		595 x 1050 x 300	3	\$117.50	\$191.47	\$200.03	\$291.37	\$252.49	\$280.97
2247120	WML3-120		595 x 1200 x 300	3	\$121.00	\$198.45	\$208.23	\$310.15	\$266.04	\$298.27
2247135	WML3-135		595 x 1350 x 300	3	\$124.55	\$205.48	\$216.49	\$328.97	\$279.65	\$315.62
2247150	WML3-150		595 x 1500 x 300	3	\$128.07	\$212.48	\$224.71	\$347.76	\$293.22	\$332.94

Wall Open Cabinets - LOW Series - Medium (605mm tile height)

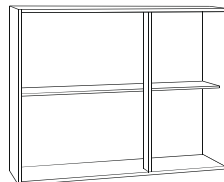
Product No.	Supplier Code	Description	Size <small>Height x Width x Depth (mm)</small>	Doors	Price for Carcase and Hardware Only	Price commodity Texture or Woodgrain Matt doors	Price with Sheen or Woodgrain sheen or Eurograin or Finegrain door	Price with 2 pack gloss painted door	Price with Createc Gloss Door Or Stylite Gloss Door	Price with Createc Woodgrain Gloss or Abstract Gloss Door
2245031	WLS-OS-30	Open shelf Unit The Same Colour as Your Doors	595 x 300 x 320	2	\$74.67	\$113.03	\$153.29	\$269.71	\$217.57	\$254.40
2245041	WLS-OS-40		595 x 400 x 320	2	\$74.67	\$119.48	\$161.83	\$296.68	\$235.28	\$278.70



1 Door Wall Cabinet (WML1)



2 Door Wall Cabinet (WML2)

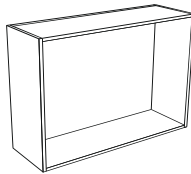


3 Door Wall Cabinet (WML3)

For e.g. If you have a 585mm space order a 600mm Cabinet and put 585mm in the variable width column on your order form.

Wall Cabinets - LOW Series - Short (Refrigerator or plain rangehood)

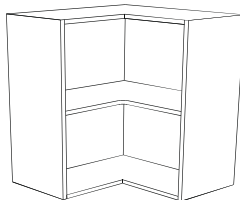
Product No.	Supplier Code	Description	Size <small>Height x Width x Depth (mm)</small>	Doors	Price for Carcase and Hardware Only	Price commodity Texture or Woodgrain Matt doors	Price with Sheen or Woodgrain sheen or Eurograin or Finegrain door	Price with 2 pack gloss painted door	Price with Createc Gloss Door Or Stylite Gloss Door	Price with Createc Woodgrain Gloss or Abstract Gloss Door
2248060	WRL2-60	Wall cabinets short, Low Series with 2 doors. For use above rangehoods and refrigerators.	300 x 600 x 300	2	\$92.01	\$131.10	\$133.57	\$170.79	\$159.36	\$168.05
2248080	WRL2-80		300 x 800 x 300	2	\$94.92	\$136.69	\$139.98	\$184.35	\$169.36	\$180.70
2248090	WRL2-90		300 x 900 x 300	2	\$96.37	\$139.47	\$143.17	\$191.12	\$174.36	\$187.01
2248100	WRL2-1000		300 x 1000 x 300	2	\$97.84	\$142.29	\$146.40	\$197.92	\$179.39	\$193.36
2249085	WRL1-85	As above but supplied with a flip-up door.	300 x 850 x 300	1	\$142.07	\$168.98	\$172.48	\$218.25	\$202.77	\$214.38
2249090	WRL1-90		300 x 900 x 300	1	\$142.80	\$170.38	\$174.08	\$221.65	\$205.27	\$217.55
2249095	WRL1-95		300 x 950 x 300	1	\$143.55	\$171.80	\$175.71	\$225.06	\$207.79	\$220.73



2 Door Wall Cabinet

Corner Wall Cabinets - LOW Series (Sizes are Fixed Not Variable)

Product No.	Supplier Code	Description	Size <small>Height x Width x Depth (mm)</small>	Doors	Price for Carcase and Hardware Only	Price commodity Woodgrain Matt doors	Price with Woodgrain sheen or Eurograin or Finegrain door	Price with 2 pack gloss painted door	Price with Createc Gloss Door	Price with Createc Woodgrain Gloss or Abstract Gloss Door
MEDIUM										
2346606	CWML2-60	Corner wall cabinet with 1 bi-fold door. Nominat L or R hinge when ordering.	595 x 600^600 x 300^300	2	\$146.43	\$192.49	\$197.05	\$257.16	\$232.03	\$247.52
2347906	CWML3-9060	Corner wall cabinet, extended left. This cabinet has a bi-fold door hinged from the short side and a single door hinged from the long side.	595 x 900^600 x 300^300	3	\$169.11	\$238.67	\$245.68	\$327.71	\$291.36	\$315.09
2347609	CWML3-6090	Corner wall cabinet, extended right. This cabinet has a bi-fold door hinged from the short side and a single door hinged from the long side.	595 x 600^900 x 300^300	3	\$169.11	\$238.67	\$245.68	\$327.71	\$291.36	\$315.09



Corner Wall Cabinet (CWTL & CWML)

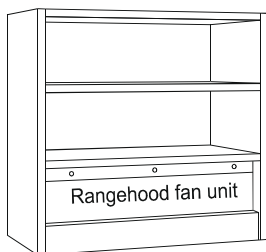
For e.g. If you have a 685mm space order a 700mm Cabinet and put 685mm in the variable width column on your order form.

Range hoods - Slide out - To suit Electric and Gas Hotplates - LOW Series

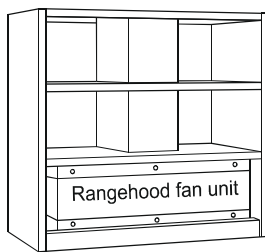
Product No.	Supplier Code	Description	Size Height x Width x Depth (mm)	Doors	Price for Carcase and Hardware Only	Price commodity Texture or Woodgrain Matt doors	Price with Sheen or Woodgrain sheen or Eurograin or Finegrain door	Price with 2 pack gloss painted door	Price with Createc Gloss Door Or Stylite Gloss Door	Price with Createc Woodgrain Gloss or Abstract Gloss Door
For use with ELECTRIC HOTPLATE										
2458060	RHEL2-60DL	De Longhi TA60SS 600mm, 40mm handle	595 x 600 x 300	2	\$102.61	\$166.01	\$170.90	\$233.09	\$207.31	\$224.50
2459060	RHEL2-60HAR	Hafele 539.82.022 , 70mm handle	595 x 600 x 300	2	\$98.74	\$162.01	\$166.90	\$228.99	\$203.30	\$220.45
2459090	RHEL2-90HAR	Hafele 539.82.022 , 70mm handle	595 x 900 x 300	2	\$105.78	\$177.03	\$184.37	\$269.19	\$231.47	\$256.49
2460060	RHEL2-60HA	Hafele 537.83.002, R600, 40mm handle	595 x 600 x 300	2	\$97.59	\$160.99	\$165.88	\$228.06	\$202.28	\$219.48
2460090	RHEL2-90HA	Hafele 537.83.002, R900, 40mm handle	595 x 900 x 300	2	\$104.62	\$176.01	\$183.35	\$268.27	\$230.45	\$255.52
2470060	RHEL2-60MI	Milano 537.83.002, R600, 40mm handle	595 x 600 x 300	2	\$102.70	\$147.68	\$151.96	\$205.44	\$185.66	\$200.17
For use with GAS HOTPLATE										
2461060	RHGL2-60DL	De Longhi TA60SS 600mm, 40mm handle	450 x 600 x 300	2	\$95.62	\$155.14	\$158.84	\$210.12	\$190.03	\$203.38
2462060	RHGL2-60HAR	Hafele 539.82.022 , 70mm handle	450 x 600 x 300	2	\$93.25	\$152.63	\$156.33	\$207.51	\$187.51	\$200.82
2462090	RHGL2-90HAR	Hafele 539.82.022 , 70mm handle	450 x 900 x 300	2	\$98.19	\$164.11	\$169.66	\$238.35	\$208.95	\$228.39
2463060	RHGL2-60HA	Hafele 537.83.002, R600, 40mm handle	450 x 600 x 300	2	\$92.10	\$151.62	\$155.32	\$206.61	\$186.51	\$199.87
2463090	RHGL2-90HA	Hafele 537.83.002, R900, 40mm handle	450 x 900 x 300	2	\$97.05	\$163.11	\$168.66	\$237.44	\$207.94	\$227.44
2473090	RHGL2-60MI	Milano 537.83.002, R600, 40mm handle	450 x 600 x 300	2	\$96.15	\$137.52	\$140.68	\$185.58	\$169.53	\$180.47

Notes

DL = DeLonghi	Recirculated at top	
HAR = Hafele 539.82.022	Front recirculated	Available from RTB Page 34
MI = Milano 537.83.002	Ducted through Top	Available from RTB Page 34



Slide out Range hood Cabinet without duct box (RHEL & RHGL)



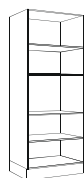
Slide out Range hood Cabinet with duct box (RHEL & RHGL)

Please Note: Range hood fan unit is not included in cabinet price

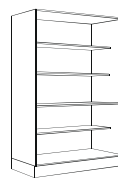
For e.g. If you have a 585mm space order a 600mm Cabinet and put 585mm in the variable width column on your order form.

Pantry Cabinets - HIGH Series - Standard depth (590mm)

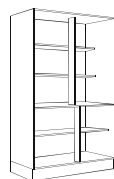
Product No.	Supplier Code	Description	Size <small>Height x Width x Depth (mm)</small>	Doors	Price for Carcase and Hardware Only	Price commodity Texture or Woodgrain Matt doors	Price with Sheen or Woodgrain sheen or Eurograin or Finegrain door	Price with 2 pack gloss painted door	Price with Createc Gloss Door Or Stylite Gloss Door	Price with Createc Woodgrain Gloss or Abstract Gloss Door
1512030	PPOH1-30	Cabinet for pull out pantry with 300mm baskets. Pull out pantry fittings are NOT INCLUDED with cabinet. See accessories list on page 33 to order.	2150 x 300 x 590	1	\$1,036.68	\$1,081.01	\$1,089.85	\$1,182.10	\$1,143.52	\$1,172.32
1512040	PPOH1-40	Cabinet for pull out pantry with 400mm baskets. Pull out pantry fittings are NOT INCLUDED with cabinet. See accessories list on page 31 to order.	2150 x 400 x 590	1	\$181.25	\$233.07	\$244.86	\$361.94	\$311.42	\$348.92
1504030	PH1-30	Includes 1 horizontal partition, 1 adjustable shelf in bottom section and 2 adjustable shelves in top section. Nominate L or R hinge when ordering.	2150 x 300 x 590	1	\$207.59	\$251.92	\$260.76	\$353.01	\$314.43	\$343.23
1504040	PH1-40		2150 x 400 x 590	1	\$219.96	\$271.79	\$283.57	\$400.66	\$350.13	\$387.63
1504050	PH1-50		2150 x 500 x 590	1	\$232.31	\$291.63	\$306.36	\$448.28	\$385.82	\$432.02
1504060	PH1-60		2150 x 600 x 590	1	\$244.74	\$311.56	\$329.23	\$495.98	\$421.58	\$476.48
1505070	PH2-70	Includes 1 horizontal partition, 1 adjustable shelf in bottom section and 2 adjustable shelves in top section.	2150 x 700 x 590	2	\$275.30	\$371.45	\$392.07	\$586.42	\$497.31	\$563.61
1505080	PH2-80		2150 x 800 x 590	2	\$287.67	\$391.32	\$414.89	\$634.06	\$533.01	\$608.02
1505090	PH2-90		2150 x 900 x 590	2	\$300.20	\$411.34	\$437.86	\$681.86	\$568.87	\$652.58
1505100	PH2-100		2150 x 1000 x 590	2	\$314.59	\$433.23	\$462.69	\$731.52	\$606.60	\$699.00
1505110	PH2-110	Centre stile, deep bottom adjustable shelf, shelves in top section 440mm deep.	2150 x 1100 x 590	2	\$322.90	\$449.04	\$481.44	\$775.11	\$638.24	\$739.34
1505120	PH2-120		2150 x 1200 x 590	2	\$334.88	\$468.51	\$503.86	\$822.36	\$673.55	\$783.35
1507109	PRH1-109	Return panel pantry. All L-shaped adjustable shelves. Cabinet includes 1 door and 1 490mm return panel. Nominate L or R hinge when ordering.	2150 x 1090 x 590	2	\$333.57	\$458.96	\$491.07	\$785.78	\$646.58	\$746.81
1507123	PRH1-123	Return panel pantry. All L-shaped adjustable shelves. Cabinet includes 1 door and 1 630mm return panel. Nominate L or R hinge when ordering.	2150 x 1230 x 590	2	\$353.46	\$489.34	\$525.58	\$858.58	\$699.13	\$811.54



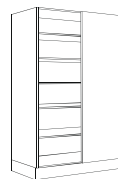
1 Door Pantry Cabinet (PH1)



2 Door Pantry Cabinet (PH2)



2 Door Pantry Cabinet with centre stile & 440mm deep shelves (PH2)

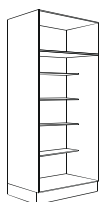


Return Panel Pantry - includes return panel (PRH1)

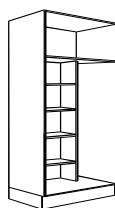
For e.g. If you have a 585mm space order a 600mm Cabinet and put 585mm in the variable width column on your order form.

Broom Cabinets - HIGH Series

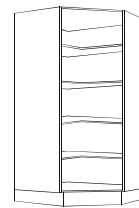
Product No.	Supplier Code	Description	Size <small>Height x Width x Depth (mm)</small>	Doors	Price for Carcase and Hardware Only	Price commodity Texture or Woodgrain Matt doors	Price with Sheen or Woodgrain sheen or Eurograin or Finegrain door	Price with 2 pack gloss painted door	Price with Createc Gloss Door Or Stylite Gloss Door	Price with Createc Woodgrain Gloss or Abstract Gloss Door
1650030	BH1-30	1 horizontal partition at 1600mm from bottom, 1 adjustable shelf above, 4 shallow adjustable shelves below. Nominate L or R hinge when ordering.	2150 x 300 x 590	1	\$204.01	\$248.34	\$257.17	\$349.43	\$310.85	\$339.65
1650040	BH1-40		2150 x 400 x 590	1	\$214.94	\$266.76	\$278.54	\$395.63	\$345.11	\$382.61
1650050	BH1-50		2150 x 500 x 590	1	\$225.90	\$285.22	\$299.95	\$441.87	\$379.40	\$425.60
1650060	BH1-60		2150 x 600 x 590	1	\$236.89	\$303.70	\$321.38	\$488.12	\$413.72	\$468.62
1635060	BIBH1-60	As above, with 150mm wide ironing board division on opposite side to hinges. Nominate L or R hinge when ordering.	2150 x 600 x 590	1	\$249.69	\$316.51	\$334.18	\$500.93	\$426.53	\$481.43



Standard Broom Cabinet (BH1)



Broom Cabinet with ironing board division (BIBH1)



Corner Pantry Cabinet (CPH1)

Corner Pantry Cabinet - HIGH Series (Sizes are Fixed Not Variable)

Product No.	Supplier Code	Description	Size <small>Height x Width x Depth (mm)</small>	Doors	Price for Carcase and Hardware Only	Price commodity Texture or Woodgrain Matt doors	Price with Sheen or Woodgrain sheen or Eurograin or Finegrain door	Price with 2 pack gloss painted door	Price with Createc Gloss Door Or Stylite Gloss Door	Price with Createc Woodgrain Gloss or Abstract Gloss Door
1750101	CPH1-100	All L-shaped adjustable shelves. Nominate L or R hinge when ordering.	2150 x 1000^1000 x 597^597	1	\$502.35	\$564.67	\$580.58	\$735.95	\$665.19	\$714.87

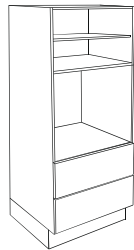
Pantry Cabinet - High Series with 3 Unequal Drawers Under

Product No.	Supplier Code	Description	Size <small>Height x Width x Depth (mm)</small>	Doors	Price for Carcase and Hardware Only	Price commodity Texture or Woodgrain Matt doors	Price with Sheen or Woodgrain sheen or Eurograin or Finegrain door	Price with 2 pack gloss painted door	Price with Createc Gloss Door Or Stylite Gloss Door	Price with Createc Woodgrain Gloss or Abstract Gloss Door
2724060	P3DL-60	Pantry with 2 Drawers above and 3 Unequal Drawers Below. (1 x 177mm, 2 x 267mm high drawer fronts). (Metal Sides)	2150 x 600 x 590	5	\$386.80	\$516.76	\$532.62	\$692.43	\$617.05	\$670.21
2724070	P3DL-70		2150 x 700 x 590	5	\$398.07	\$535.81	\$554.32	\$737.55	\$650.33	\$711.68
2724080	P3DL-80		2150 x 800 x 590	5	\$409.38	\$554.91	\$576.07	\$782.71	\$683.64	\$753.19
2724090	P3DL-90		2150 x 900 x 590	5	\$420.74	\$574.06	\$597.86	\$827.92	\$717.00	\$794.75
2824060	P3DH-60	Pantry with 2 Drawers above and 3 Unequal Drawers Below. (1 x 177mm, 2 x 267mm high drawer fronts). (Soft Close)	2150 x 600 x 590	5	\$487.98	\$623.70	\$641.33	\$817.58	\$733.50	\$792.33
2824070	P3DH-70		2150 x 700 x 590	5	\$499.25	\$643.47	\$664.04	\$866.34	\$769.07	\$836.96
2824080	P3DH-80		2150 x 800 x 590	5	\$510.56	\$663.28	\$686.79	\$915.14	\$804.68	\$881.63
2824090	P3DH-90		2150 x 900 x 590	5	\$521.92	\$683.14	\$709.60	\$963.99	\$840.34	\$926.35

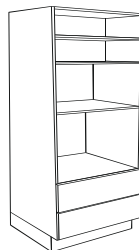
For e.g. If you have a 585mm space order a 600mm Cabinet and put 585mm in the variable width column on your order form.

Wall Oven Cabinets - HIGH Series - Drawer/ Oven/ 2 door +/- Microwave Section

Product No.	Supplier Code	Description	Size <small>Height x Width x Depth (mm)</small>	Drawers and Doors	Price for Carcase and Hardware Only	Price commodity Texture or Woodgrain Matt doors	Price with Sheen or Woodgrain sheen or Eurograin or Finegrain door	Price with 2 pack gloss painted door	Price with Createc Gloss Door Or Stylite Gloss Door	Price with Createc Woodgrain Gloss or Abstract Gloss Door
1839060	WOH2-60M	This is a full cabinet for ovens with no microwave space above. Please nominate oven height and width when placing order. Cabinet may not be suitable for gas ovens.	2150 x 600 x 590	4	\$290.03	\$386.09	\$396.41	\$504.95	\$456.56	\$491.38
1839070	WOH2-70M		2150 x 700 x 590	4	\$301.09	\$402.36	\$414.39	\$538.06	\$482.07	\$522.27
1880060	WOH2-60T		2150 x 600 x 590	4	\$381.57	\$477.64	\$487.95	\$596.49	\$548.10	\$582.92
1880070	WOH2-70T		2150 x 700 x 590	4	\$392.56	\$493.82	\$505.86	\$629.53	\$573.53	\$613.73
1841060	WOMH2-60M	This cabinet is as above, but includes a section for a microwave. Please note the microwave section will be white. If you would like the microwave section to be made from the same material as the doors, please choose a combination from the cabinets on the next page. Please nominate oven height and width when placing order. Cabinet may not be suitable for gas ovens. Please check with us if you are planning to use this cabinet for a gas oven.	2150 x 600 x 590	4	\$300.16	\$393.28	\$402.69	\$501.77	\$458.88	\$490.79
1841070	WOMH2-70M		2150 x 700 x 590	4	\$312.43	\$410.38	\$421.37	\$534.07	\$484.42	\$521.28
1882060	WOMH2-60T		2150 x 600 x 590	4	\$391.71	\$484.82	\$494.24	\$593.31	\$550.43	\$582.34
1882070	WOMH2-70T		2150 x 700 x 590	4	\$403.92	\$501.87	\$512.85	\$625.55	\$575.91	\$612.76



Wall Oven Cabinet (WOH2)



Wall Oven Cabinet including microwave section (WOMH2)

Last letter M is for Metabox drawers
Last letter T is for Triomax drawers (soft close)

For e.g. If you have a 585mm space order a 600mm Cabinet and put 585mm in the variable width column on your order form.

Wall Oven Base, Microwave Box and Upper Oven Cabinets - HIGH Series

Product No.	Supplier Code	Description	Size <small>Height x Width x Depth (mm)</small>	Drawers and Doors	Price for Carcase and Hardware Only	Price commodity Texture or Woodgrain Matt doors	Price with Sheen or Woodgrain sheen or Eurograin or Finegrain door	Price with 2 pack gloss painted door	Price with Createc Gloss Door Or Stylite Gloss Door	Price with Createc Woodgrain Gloss or Abstract Gloss Door
1915060	WOB2-60M	Wall Oven Base, 2 Drawers	XXX x 600 x 590	2	\$221.33	\$266.11	\$270.23	\$321.88	\$303.21	\$317.31
1915070	WOB2-70M	Wall Oven Base, 2 Drawers	XXX x 700 x 590	2	\$227.78	\$274.91	\$279.71	\$337.36	\$315.69	\$332.04
1967070	WOB2-70T	Wall Oven Base, 2 Drawers	XXX x 700 x 590	2	\$319.29	\$366.42	\$371.21	\$428.87	\$407.20	\$423.55
1967070	WOB2-70T	Wall Oven Base, 2 Drawers	XXX x 700 x 590	2	\$319.29	\$366.42	\$371.21	\$428.87	\$407.20	\$423.55
1914060	MWBWO-60	Wall Oven Microwave Box	400 x 600 x 500			\$113.06	\$169.79	\$301.65	\$242.65	\$285.36
1914070	MWBWO-70	Wall Oven Microwave Box	400 x 700 x 500			\$116.73	\$174.83	\$318.31	\$253.68	\$300.51
1951060	WOXH2-60	Wall Oven Upper, 2 Doors	XXX x 600 x 360	2	\$118.25	\$166.85	\$172.23	\$236.97	\$210.80	\$228.87
1951070	WOXH2-70	Wall Oven Upper, 2 Doors	XXX x 700 x 360	2	\$121.85	\$172.97	\$179.26	\$251.97	\$221.75	\$242.56

Choose 1 x Wall Oven Base, 1 x Microwave Box and 1 x Wall Oven Upper Cabinet to make a wall oven with matching colour microwave section (colour will match door material).

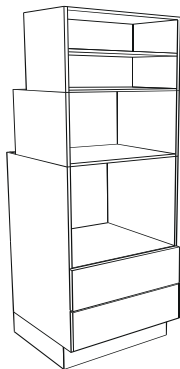
Please nominate oven height and width.

(Wall Oven Upper cabinet height will be adjusted at no extra charge to suit your oven height)

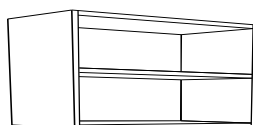
This cabinet may not be suitable for gas ovens. Please call us for more information.

Microwave Box and Wall Cabinets - HIGH Series

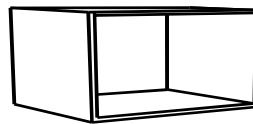
Product No.	Supplier Code	Description	Size <small>Height x Width x Depth (mm)</small>	Drawers and Doors	Price for Carcase and Hardware Only	Price commodity Texture or Woodgrain Matt doors	Price with Sheen or Woodgrain sheen or Eurograin or Finegrain door	Price with 2 pack gloss painted door	Price with Createc Gloss Door Or Stylite Gloss Door	Price with Createc Woodgrain Gloss or Abstract Gloss Door
2214060	MWB-60	Wall Microwave Box	400 x 600 x 470			\$121.17	\$180.74	\$339.73	\$266.05	\$317.48
2214070	MWB-70	Wall Microwave Box	400 x 700 x 470			\$126.20	\$187.70	\$363.27	\$281.47	\$338.65
2265060	WMWH2-60	Wall Microwave Upper, 2 Doors	640 x 600 x 360	2	\$106.22	\$154.41	\$159.68	\$222.28	\$197.70	\$215.38
2265070	WMWH2-70	Wall Microwave Upper, 2 Doors	640 x 700 x 360	2	\$108.94	\$159.61	\$165.75	\$235.99	\$207.61	\$227.97



Wall Oven Base Cabinet (WOB2) with Microwave Box (MWBWO) and Upper Cabinet (WOXH2)



Wall Microwave Upper Cabinet (WMWH2)



Wall Microwave Box (MWB)

Note: Due to design features, the wall microwave box and wall microwave upper cabinet have to be purchased together.

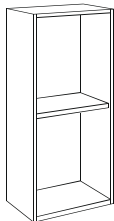
For e.g. If you have a 585mm space order a 600mm Cabinet and put 585mm in the variable width column on your order form.

Wall Cabinets - HIGH Series - Medium (605mm tile height)

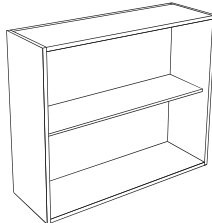
Product No.	Supplier Code	Description	Size <small>Height x Width x Depth (mm)</small>	Doors	Price for Carcase and Hardware Only	Price commodity Texture or Woodgrain Matt doors	Price with Sheen or Woodgrain sheen or Eurograin or Finegrain door	Price with 2 pack gloss painted door	Price with Createc Gloss Door Or Stylite Gloss Door	Price with Createc Woodgrain Gloss or Abstract Gloss Door
2253030	WMH1-30	Wall cabinets medium (605mm tile height), High Series with 1 door. Nominate L or R hinge when ordering.	795 x 300 x 300	1	\$91.69	\$117.87	\$121.14	\$165.21	\$150.44	\$161.32
2253035	WMH1-35		795 x 350 x 300	1	\$93.26	\$120.93	\$124.74	\$173.49	\$156.43	\$168.96
2253040	WMH1-40		795 x 400 x 300	1	\$94.83	\$123.99	\$128.35	\$181.77	\$162.42	\$176.60
2253045	WMH1-45		795 x 450 x 300	1	\$96.40	\$127.05	\$131.95	\$190.05	\$168.40	\$184.24
2253050	WMH1-50		795 x 500 x 300	1	\$97.98	\$130.13	\$135.58	\$198.34	\$174.41	\$191.89
2253055	WMH1-55		795 x 550 x 300	1	\$99.58	\$133.22	\$139.21	\$206.65	\$180.43	\$199.56
2253060	WMH1-60	795 x 600 x 300	1	\$101.15	\$136.28	\$142.82	\$214.93	\$186.42	\$207.20	
2254060	WMH2-60	Wall cabinets medium (605mm tile height), High Series with 2 doors.	795 x 600 x 300	2	\$106.75	\$159.10	\$165.64	\$238.79	\$209.24	\$231.01
2254070	WMH2-70		795 x 700 x 300	2	\$109.87	\$165.21	\$172.83	\$255.33	\$221.20	\$246.27
2254080	WMH2-80		795 x 800 x 300	2	\$113.02	\$171.35	\$180.06	\$271.90	\$233.19	\$261.56
2254090	WMH2-90		795 x 900 x 300	2	\$116.22	\$177.53	\$187.33	\$288.52	\$245.23	\$276.90
2254100	WMH2-100		795 x 1000 x 300	2	\$119.39	\$183.68	\$194.58	\$305.10	\$257.24	\$292.20
2254110	WMH2-110		795 x 1100 x 300	2	\$122.52	\$189.81	\$201.79	\$321.66	\$269.22	\$307.48
2254120	WMH2-120	795 x 1200 x 300	2	\$125.66	\$195.93	\$209.00	\$338.22	\$281.20	\$322.75	
2255090	WMH3-90	Wall cabinets medium (605mm tile height), High Series with 3 doors. Door hinge options for this cabinet include LRR, LRL, LLR, RLR. Nominate hinge option when ordering.	795 x 900 x 300	3	\$123.74	\$202.27	\$212.07	\$314.30	\$269.97	\$302.63
2255105	WMH3-105		795 x 1050 x 300	3	\$128.49	\$211.50	\$222.93	\$339.18	\$287.98	\$325.59
2255120	WMH3-120		795 x 1200 x 300	3	\$133.20	\$220.68	\$233.75	\$364.01	\$305.95	\$348.50
2255135	WMH3-135		795 x 1350 x 300	3	\$137.93	\$229.90	\$244.60	\$388.88	\$323.95	\$371.45
2255150	WMH3-150		795 x 1500 x 300	3	\$142.64	\$239.08	\$255.42	\$413.71	\$341.92	\$394.36

Wall Open Cabinets - High Series - Medium (605mm tile height)

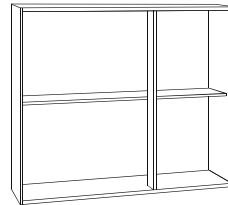
Product No.	Supplier Code	Description	Size <small>Height x Width x Depth (mm)</small>	Doors	Price for Carcase and Hardware Only	Price commodity Texture or Woodgrain Matt doors	Price with Sheen or Woodgrain sheen or Eurograin or Finegrain door	Price with 2 pack gloss painted door	Price with Createc Gloss Door Or Stylite Gloss Door	Price with Createc Woodgrain Gloss or Abstract Gloss Door
2253031	WHS-OS-30	Open shelf Unit The Same Colour as Your Doors	795 x 300 x 320	2	\$74.67	\$121.95	\$164.99	\$306.05	\$241.38	\$287.09
2253041	WHS-OS-40		795 x 400 x 320	2	\$74.67	\$129.12	\$174.54	\$336.67	\$261.39	\$314.54



1 Door Wall Cabinet (WMH1)



2 Door Wall Cabinet (WMH2)

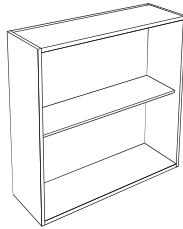


3 Door Wall Cabinet (WMH3)

For e.g. If you have a 585mm space order a 600mm Cabinet and put 585mm in the variable width column on your order form.

Wall Cabinets - HIGH Series - Short (Refrigerator or plain range hood)

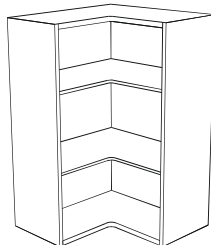
Product No.	Supplier Code	Description	Size <small>Height x Width x Depth (mm)</small>	Doors	Price for Carcase and Hardware Only	Price commodity Texture or Woodgrain Matt doors	Price with Sheen or Woodgrain sheen or Eurograin or Finegrain door	Price with 2 pack gloss painted door	Price with Createc Gloss Door Or Stylite Gloss Door	Price with Createc Woodgrain Gloss or Abstract Gloss Door
2256060	WRH2-60	Wall cabinets short, High Series with 2 doors. For use above range hoods and refrigerators.	515 x 600 x 300	2	\$98.88	\$143.73	\$147.96	\$201.62	\$181.49	\$195.86
2256070	WRH2-70		515 x 700 x 300	2	\$101.13	\$148.03	\$152.97	\$212.84	\$189.59	\$206.14
2256075	WRH2-75		515 x 750 x 300	2	\$102.26	\$150.19	\$155.48	\$218.45	\$193.64	\$211.28
2256080	WRH2-80		515 x 800 x 300	2	\$103.40	\$152.36	\$158.00	\$224.08	\$197.71	\$216.44
2256085	WRH2-85		515 x 850 x 300	2	\$104.51	\$154.50	\$160.50	\$229.68	\$201.74	\$221.56
2256090	WRH2-90		515 x 900 x 300	2	\$105.69	\$156.70	\$163.05	\$235.33	\$205.84	\$226.75
2256095	WRH2-95		515 x 950 x 300	2	\$106.83	\$158.87	\$165.57	\$240.96	\$209.90	\$231.91



2 Door Wall Cabinet (WRH2)

Corner Wall Cabinets - HIGH Series (Sizes are Fixed Not Variable)

Product No.	Supplier Code	Description	Size <small>Height x Width x Depth (mm)</small>	Doors	Price for Carcase and Hardware Only	Price commodity Texture or Woodgrain Matt doors	Price with Sheen or Woodgrain sheen or Eurograin or Finegrain door	Price with 2 pack gloss painted door	Price with Createc Gloss Door Or Stylite Gloss Door	Price with Createc Woodgrain Gloss or Abstract Gloss Door
MEDIUM										
2354606	CWMH2-60	Corner wall cabinet with 1 bi-fold door. Nominate L or R hinge when ordering.	795 x 600^600 x 300^300	2	\$158.56	\$209.72	\$215.82	\$290.60	\$257.51	\$277.97
2355906	CWMH3-9060	Corner wall cabinet, extended left. This cabinet has a bi-fold door hinged from the short side and a single door hinged from the long side.	795 x 900^600 x 300^300	3	\$185.34	\$262.67	\$272.04	\$375.90	\$328.03	\$359.38
2355609	CWMH3-6090	Corner wall cabinet, extended right. This cabinet has a bi-fold door hinged from the short side and a single door hinged from the long side.	795 x 600^900 x 300^300	3	\$185.34	\$262.67	\$272.04	\$375.90	\$328.03	\$359.38



Corner Wall Cabinet (Cwth & Cwmh)

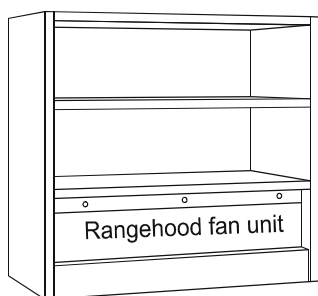
For e.g. If you have a 685mm space order a 700mm Cabinet and put 685mm in the variable width column on your order form.

Rangehood Cabinets - Slideout - To suit Electric and Gas Hotplates - HIGH Series

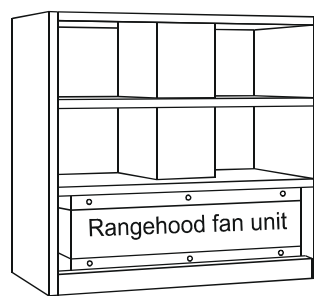
Product No.	Supplier Code	Description	Size <small>Height x Width x Depth (mm)</small>	Doors	Price for Carcase and Hardware Only	Price commodity Texture or Woodgrain Matt doors	Price with Sheen or Woodgrain sheen or Eurograin or Finegrain door	Price with 2 pack gloss painted door	Price with Createc Gloss Door Or Stylite Gloss Door	Price with Createc Woodgrain Gloss or Abstract Gloss Door
For use with ELECTRIC HOTPLATE										
2558060	RHEH2-60DL	De Longhi TA60SS 600mm, 40mm handle	795 x 600 x 300	2	\$108.91	\$177.67	\$184.21	\$260.70	\$227.81	\$250.29
2559060	RHEH2-60HAR	Hafele 539.82.022 , 70mm handle	795 x 600 x 300	2	\$102.84	\$171.46	\$178.00	\$254.39	\$221.60	\$244.03
2559090	RHEH2-90HAR	Hafele 539.82.022 , 70mm handle	795 x 900 x 300	2	\$110.91	\$189.52	\$199.32	\$305.34	\$257.22	\$289.92
2560060	RHEH2-60HA	Hafele 537.83.002, R600, 40mm handle	795 x 600 x 300	2	\$101.70	\$170.46	\$176.99	\$253.48	\$220.59	\$243.07
2560090	RHEH2-90HA	Hafele 537.83.002, R900, 40mm handle	795 x 900 x 300	2	\$109.78	\$188.53	\$198.33	\$304.45	\$256.23	\$288.98
2570060	RHEH2-60MI	Milano 537.83.002, R600, 40mm handle	795 x 600 x 300	2	\$109.13	\$160.08	\$166.19	\$235.84	\$207.92	\$228.32
For use with GAS HOTPLATE										
2561060	RHGH2-60DL	De Longhi TA60SS 600mm, 40mm handle	650 x 600 x 300	2	\$104.70	\$169.57	\$174.91	\$240.50	\$213.30	\$231.95
2562060	RHGH2-60HAR	Hafele 539.82.022 , 70mm handle	650 x 600 x 300	2	\$100.11	\$164.85	\$170.20	\$235.68	\$208.58	\$227.18
2562090	RHGH2-90HAR	Hafele 539.82.022 , 70mm handle	650 x 900 x 300	2	\$107.50	\$180.77	\$188.79	\$278.67	\$238.86	\$265.99
2563060	RHGH2-60HA	Hafele 537.83.002, R600, 40mm handle	650 x 600 x 300	2	\$98.96	\$163.83	\$169.17	\$234.76	\$207.56	\$226.21
2563090	RHGH2-90HA	Hafele 537.83.002, R900, 40mm handle	650 x 900 x 300	2	\$106.34	\$179.75	\$187.77	\$277.74	\$237.84	\$265.02
2574060	RHGH2-60MI	Milano 537.83.002, R600, 40mm handle	650 x 600 x 300	2	\$104.83	\$151.96	\$156.89	\$215.56	\$193.47	\$210.09

Notes

DL = DeLonghi	Recirculated at top only	
HAR = Hafele 539.82.022	Front recirculated	Available from RTB Page 34
MI = Milano 537.83.002	Ducted through Top	Available from RTB Page 34



Slideout Rangehood Cabinet without duct box (RHEH & RHGH)



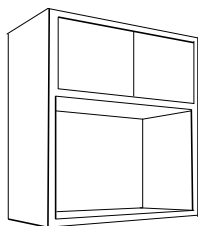
Slideout Rangehood Cabinet with duct box (RHEH & RHGH)

Please Note: Rangehood fan unit is not included in cabinet price

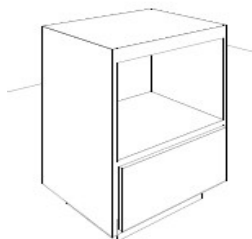
For e.g. If you have a 585mm space order a 600mm Cabinet and put 585mm in the variable width column on your order form.

Special Cabinets Under bench Microwave Cabinet With 1 Drawer

Product No.	Supplier Code	Description	Size	Doors	Price for Carcase and Hardware Only	Price commodity Texture or Woodgrain Matt doors	Price with Sheen or Woodgrain sheen or Eurograin or Finegrain door	Price with 2 pack gloss painted door	Price with Createc Gloss Door Or Stylite Gloss Door	Price with Createc Woodgrain Gloss or Abstract Gloss Door
			Height x Width x Depth (mm)							
1091060	FMWB-60M	Under Bench Microwave Cabinet	720 x 600 x 580	1	\$135.24	\$205.09	\$256.86	\$469.45	\$371.51	\$443.14
1091070	FMWB-70M	450mm High With 1 Drawer Under 270mm High (Metabox)	720 x 700 x 580	1	\$138.48	\$248.86	\$328.47	\$654.76	\$501.46	\$614.90
1092060	FMWB-60T	Under Bench Microwave Cabinet	720 x 600 x 580	1	\$170.45	\$271.99	\$348.37	\$647.28	\$507.27	\$610.96
1092070	FMWB-70T	450mm High With 1 Drawer Under 270mm High (Soft Close)	720 x 700 x 580	1	\$173.66	\$284.04	\$363.65	\$689.94	\$536.64	\$650.08



Microwave Open Cabinet With 2 Doors Above



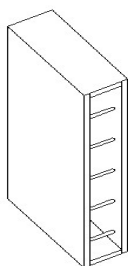
Microwave Open Cabinet With 1 Drawer Under

Special Cabinets Above bench Microwave Cabinet With 2 doors above

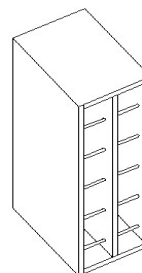
Product No.	Supplier Code	Description	Size	Doors	Price commodity Texture or Woodgrain Matt doors	Price with Sheen or Woodgrain sheen or Eurograin or Finegrain door	Price with 2 pack gloss painted door	Price with Createc Gloss Door Or Stylite Gloss Door	Price with Createc Woodgrain Gloss or Abstract Gloss Door
			Height x Width x Depth (mm)						
2936060	MWOLS-60	Above Bench Microwave Cabinet	750 x 632 x 500	2	\$262.22	\$285.44	\$501.42	\$402.07	\$475.76
2937060	MWOHS-60	450mm High With 2 doors above	1050 x 632 x 500	2	\$304.51	\$336.37	\$627.30	\$490.77	\$592.10

Special Cabinets Wine Racks (Sizes Are Fixed Not Variable)

Product No.	Supplier Code	Description	Size	Doors	Price commodity Texture or Woodgrain Matt doors	Price with Sheen or Woodgrain sheen or Eurograin or Finegrain door	Price with 2 pack gloss painted door	Price with Createc Gloss Door Or Stylite Gloss Door	Price with Createc Woodgrain Gloss or Abstract Gloss Door
			Height x Width x Depth (mm)						
1093013	FWR-136	Under Bench wine rack single or double Row	720 x 136 x 325		\$178.88	\$230.67	\$320.43	\$281.94	\$310.55
1093025	FWR-254	holds 6 bottles each Row	720 x 254 x 325		\$271.26	\$342.63	\$476.86	\$416.15	\$460.99
1094013	FWR-L-136	Low Series Wine Rack Single or Double Row	1950 x 136 x 325		\$389.51	\$453.92	\$653.90	\$560.38	\$630.31
1094025	FWR-L-254	For Beside Fridge or Pantry Cabinets holds 15 bottles each Row	1950 x 254 x 325		\$670.89	\$762.02	\$1,067.83	\$921.95	\$1,030.42
1095013	FWR-H-136	High Series Wine Rack Single or Double Row	2150 x 136 x 325		\$427.10	\$493.58	\$711.45	\$609.13	\$685.87
1095025	FWR-H-254	For Beside Fridge or Pantry Cabinets holds 17 bottles each Row	2150 x 254 x 325		\$742.50	\$836.88	\$1,170.53	\$1,011.08	\$1,130.07



Wine Rack Units Using 10mm Brushed Aluminium Rods as Wine Holders
720 high Single Row & 720High Double Row



Note: Wine Rack Cabinets are screwed together. When using as an End Cabinet you need to order an End Panel to fit beside it.

For e.g. If you have a 585mm space order a 600mm Cabinet and put 585mm in the variable width column on your order form.

Special Cabinets Vanity Cabinets For Placing on Kick

Vanity cabinets are designed as flexible modules.

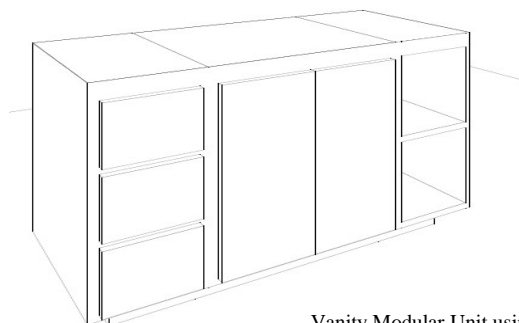
Including kick and a post form top the overall height is 860mm

When ordering chose 1 Base cabinet for your sink and then you can Mix Between Drawer units and Open shelf units to create your Desired Length and Design

For Example Choose a 2 door unit and a 3 drawer unit and/or an open shelf unit to create a Vanity. Then add the cabinet widths together so you can order a kick for the base which you can then tile over.

Don't Forget to order End panels or Fillers & a Bench top to finish it off

Product No.	Supplier Code	Description	Size <small>Height x Width x Depth (mm)</small>	Doors	Price for Carcase and Hardware Only	Price commodity Texture or Woodgrain Matt doors	Price with Sheen or Woodgrain sheen or Eurograin or Finegrain door	Price with 2 pack gloss painted door	Price with Createc Gloss Door Or Stylite Gloss Door	Price with Createc Woodgrain Gloss or Abstract Gloss Door
2983060	VWK2-60	Standard (480mm) floor cabinet with 2 doors.	680 x 600 x 480	2	\$105.82	\$155.09	\$160.68	\$227.21	\$200.14	\$218.88
2983070	VWK2-70		680 x 700 x 480	2	\$108.41	\$160.28	\$166.80	\$241.60	\$210.34	\$231.92
2983080	VWK2-80		680 x 800 x 480	2	\$111.00	\$165.47	\$172.93	\$255.98	\$220.55	\$244.96
2983090	VWK2-90		680 x 900 x 480	2	\$113.62	\$170.70	\$179.08	\$270.40	\$230.78	\$258.03
2984030	VWK-3D-300M	Standard (480mm) Drawer Cabinet 3 equal drawers (Metabox)	680 x 300 x 480	3	\$167.66	\$223.32	\$226.10	\$270.33	\$253.30	\$263.39
2984040	VWK-3D-400M		680 x 400 x 480	3	\$172.09	\$231.03	\$234.74	\$288.31	\$266.00	\$279.18
2984050	VWK-3D-500M		680 x 500 x 480	3	\$176.58	\$238.80	\$243.44	\$306.36	\$278.77	\$295.03
2985030	VWK-3D-300T	Standard (480mm) Drawer Cabinet 3 equal drawers (Soft close)	680 x 300 x 480	3	\$258.44	\$314.09	\$316.88	\$361.11	\$344.08	\$354.17
2985040	VWK-3D-400T		680 x 400 x 480	3	\$262.70	\$321.64	\$325.35	\$378.93	\$356.61	\$369.79
2985050	VWK-3D-500T		680 x 500 x 480	3	\$266.93	\$329.15	\$333.80	\$396.71	\$369.12	\$385.38
2986030	VWK-OS-30	Open shelf unit with 1 Adjustable shelf	680 x 300 x 500			\$130.72	\$190.80	\$357.48	\$278.35	\$332.42
2986040	VWK-OS-40		680 x 400 x 500			\$137.72	\$200.54	\$390.32	\$300.08	\$362.25
2986050	VWK-OS-50		680 x 500 x 500			\$144.72	\$210.28	\$423.17	\$321.81	\$392.08
2696060	K-600	Ply Wood Kick 150mm High	150 x 600 x 430			\$56.68				
2696070	K-700		150 x 700 x 430			\$57.32				
2696080	K-800		150 x 800 x 430			\$57.96				
2696090	K-900		150 x 900 x 430			\$60.12				
2696100	K-1000		150 x 1000 x 430			\$60.76				
2696110	K-1100		150 x 1100 x 430			\$61.41				
2696120	K-1200		150 x 1200 x 430			\$62.05				
2696130	K-1300		150 x 1300 x 430			\$62.69				
2696140	K-1400		150 x 1400 x 430			\$64.85				
2696150	K-1500		150 x 1500 x 430			\$65.49				



Vanity Modular Unit using a Combination of (VWK-3D & VWK2 & VWK-OS)

For e.g. If you have a 585mm space order a 600mm Cabinet and put 585mm in the variable width column on your order form.

Special Cabinets Vanity Cabinets For Suspending off Floor 300mm

Vanity cabinets are designed as flexible modules

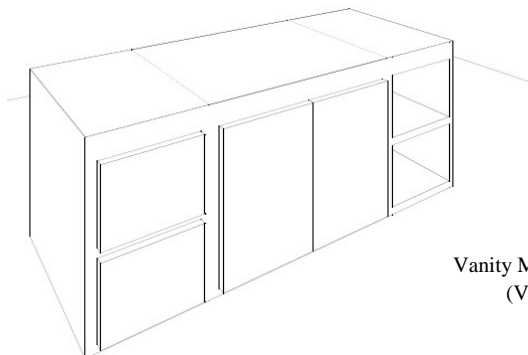
Including kick and a post form top the overall height is 860mm

When ordering chose 1 Base cabinet for your sink and then you can Mix Between Drawer units and Open shelf units to create your Desired Length and Design

For Example Choose a 2 door unit and a 3 drawer unit and/or an open shelf unit to create a Vanity.

Don't Forget to order End panels or Fillers & a Bench top to finish it off

Product No.	Supplier Code	Description	Size <small>Height x Width x Depth (mm)</small>	Doors	Price for Carcase and Hardware Only	Price commodity Texture or Woodgrain Matt doors	Price with Sheen or Woodgrain sheen or Eurograin or Finegrain door	Price with 2 pack gloss painted door	Price with Createc Gloss Door Or Stylite Gloss Door	Price with Createc Woodgrain Gloss or Abstract Gloss Door
2987060	VNK2-60	Standard (480mm) floor cabinet with 2 doors.	530 x 600 x 480	2	\$102.49	\$147.74	\$152.09	\$207.89	\$186.16	\$200.93
2987070	VNK2-70		530 x 700 x 480	2	\$104.45	\$151.81	\$156.89	\$219.23	\$194.13	\$211.14
2987080	VNK2-80		530 x 800 x 480	2	\$106.80	\$156.26	\$162.07	\$230.95	\$202.49	\$221.73
2987090	VNK2-90		530 x 900 x 480	2	\$109.17	\$160.74	\$167.27	\$242.70	\$210.87	\$232.36
2988030	VNK-2D-300M	Standard (480mm) Drawer Cabinet 2 equal drawers (Metabox)	530 x 300 x 480	2	\$150.33	\$188.48	\$190.66	\$226.44	\$215.19	\$222.95
2988040	VNK-2D-400M		530 x 400 x 480	2	\$153.80	\$194.40	\$197.30	\$239.76	\$225.01	\$235.14
2988050	VNK-2D-500M		530 x 500 x 480	2	\$157.32	\$200.36	\$203.99	\$253.12	\$234.88	\$247.37
2989030	VNK-2D-300T	Standard (480mm) Drawer Cabinet 2 equal drawers (Soft close)	530 x 300 x 480	2	\$219.40	\$257.55	\$259.73	\$295.52	\$284.26	\$292.03
2989040	VNK-2D-400T		530 x 400 x 480	2	\$222.83	\$263.42	\$266.33	\$308.78	\$294.04	\$304.17
2989050	VNK-2D-500T		530 x 500 x 480	2	\$226.27	\$269.31	\$272.94	\$322.07	\$303.83	\$316.32
2990030	VNK-OS-30	Open shelf unit with 1 Adjustable shelf	530 x 300 x 500			\$124.71	\$182.73	\$331.79	\$261.29	\$309.00
2990040	VNK-OS-40		530 x 400 x 500			\$131.71	\$192.47	\$364.63	\$283.02	\$338.83
2990050	VNK-OS-50		530 x 500 x 500			\$138.70	\$202.21	\$397.48	\$304.75	\$368.66



Vanity Modular Unit using a Combination of (VNK-2D & VNK2 & VNK-OS)

Bench tops

Product No.	Supplier Code	Description	Size Width (mm)	Price per lineal metre
400030	BLS-B300	Single rolled edge 180° (bullnose). 33mm thick Raw HMR (High Moisture Resistant) pine board substrate. Laminated on face and one edge rolled with 180° profile. Prices in lineal metres, charged in 100mm increments.	Up to 300	\$63.52
400060	BLS-B600		301 - 610mm	\$113.91
400075	BLS-B750		611 - 750mm	\$130.70
400085	BLS-B850		751 - 850mm	\$130.70
400095	BLS-B950		851 - 900mm	\$146.87
400120	BLS-B1200		Over 900	\$212.81
4001030	BLD-B300	Double rolled edge 180° (bullnose). 33mm thick Raw HMR (High Moisture Resistant) pine board substrate. Laminated on face and both edges rolled with 180° profile. Prices in lineal metres, charged in 100mm increments.	Up to 300	\$72.85
4001060	BLD-B600		301 - 610mm	\$122.93
4001075	BLD-B750		611 - 750mm	\$140.03
4001085	BLD-B850		751 - 850mm	\$140.03
4001095	BLD-B950		851 - 900mm	\$155.89
4001120	BLD-B1200		Over 900	\$221.83
4002030	BLS-S300	Single rolled edge Square form 5mm radius. 38mm thick Raw HMR (High Moisture Resistant) pine board substrate. Laminated on face and one edge rolled with 5/5mm profile. Prices in lineal metres, charged in 100mm increments.	Up to 300	\$73.22
4002060	BLS-S600		301 - 610mm	\$133.70
4002075	BLS-S750		611 - 750mm	\$153.84
4002085	BLS-S850		751 - 850mm	\$153.84
4002095	BLS-S950		851 - 900mm	\$173.25
4002120	BLS-S1200		Over 900	\$252.37
4003030	BLD-S300	Double rolled edge Square form 5mm radius. 33mm thick Raw HMR (High Moisture Resistant) pine board substrate. Laminated on face and both edges rolled with 5/5profile. Prices in lineal metres, charged in 100mm increments.	Up to 300	\$84.41
4003060	BLD-S600		301 - 610mm	\$144.50
4003075	BLD-S750		611 - 750mm	\$165.03
4003085	BLD-S850		751 - 850mm	\$165.03
4003095	BLD-S950		851 - 900mm	\$184.08
4003120	BLD-S1200		Over 900	\$263.20
4004600	BLQ-600	Single rolled edge Quadra 3mm radius.	600mm	\$152.75
4005900	BLQ-900	Double rolled edge Quadra 3mm radius.	900mm	\$225.25

Bench top Fabrication Options

Product No.	Supplier Code	Description	Price per item
4120999	BF-MM	Mason's Mitre Joint - Used for 90° joints on single edge bench tops between same and/or different width substrates.	\$54.96
4121999	BF-FM	Full Mitre Joint - Used for all joints between same width substrates (except for 90° joint) or when using grained (directional) laminates.	\$75.32
4122999	BF-DL	Uneven (Dogleg) Mitre Joint - Used for joints on double edge bench tops between different width substrates.	\$174.85
4140999	BF-LSE	Laminated Square End	\$33.85
4141999	BF-LEBC	Laminated Square End with Bevelled Corner (33mm tops only)	\$41.39
4142999	BF-LE2BC	Laminated Square End with 2 Bevelled Corners (33mm tops only)	\$48.93
4143999	BF-LAE	Laminated Arc End (33mm tops only)	\$54.96
4144999	BF-REBC	Rolled Ends with Bevelled Corner (33mm tops only)	\$45.16
4145999	BF-RE2BC	Rolled Ends with 2 Bevelled Corners (33mm tops only)	\$63.63
4146999	BF-LIETF	Bench top as End to Floor, Laminate inside Edge	\$88.40

Note:

You need to factor in the overhang of a bench top when you are calculating bench top lengths (and cabinet dimensions). The following table lists typical overhangs for different bench tops and specific applications:

Front of bench overhang (measured from cabinet not from doors)	45mm
Laminated end with bevelled corner (measured from end panel)	60mm
Rolled ends with bevelled corner (measured from end panel)	60mm
Laminated square end on end of run (measured from end panel)	20mm
Laminated square end next to fridge or washing machine (measured from end panel)	10mm
Laminated square end next to upright stove (measured from cabinet)	2mm+
(depends on opening for appliance)	

End Panels

End panels are placed wherever the side of a cabinet is going to be visible. As the sides of cabinet carcasses are always white and show assembly screws, end panels cover the cabinet construction and allow the colour coordination (ie door colour) of the kitchen to be maintained. Places where end panels would be installed include either side of a rangehood cabinet if the cabinets are stepped, one or both sides of an appliance cabinet or the end of a run of cabinets.

All panels are supplied to exact cabinet height, and depth including door thickness. If the panels are to be placed at the end of a run, we recommend you order a panel with a back scribe allowance, but you will need a power plane to adjust them to your walls (it is a good idea to check if your walls are plumb before you nominate a scribe allowance in the appropriate column on the order form). Panels going to floor automatically have 5mm extra allowance, as do the kick strips. As a guide, use panels to the floor at the end of a run (when fully seen) and panels the same height as cupboards when they are in between cupboards. This enables you to have a single kick run which has a more professional appearance.

Product No.	Supplier Code	Description	Size Height x Width (mm)	Price commodity Texture or Woodgrain Matt doors	Price with Sheen or Woodgrain sheen or Eurograin or Finegrain door	Price with 2 pack gloss painted door	Price with Createc Gloss Door Or Stylite Gloss Door	Price with Createc Woodgrain Gloss or Abstract Gloss Door
4501001	EPF-ST	Floor end panel, Standard	720 x 580	\$31.45	\$37.33	\$98.90	\$62.37	\$80.20
4501002	EPF-STE	Floor end panel, Standard (extended)	870 x 580	\$32.70	\$39.69	\$115.78	\$69.95	\$90.61
4502001	EPF-D	Floor end panel, Deep	720 x 660	\$33.63	\$40.31	\$108.05	\$68.80	\$89.03
4502002	EPF-DE	Floor end panel, Deep (extended to	870 x 660	\$35.02	\$42.96	\$126.75	\$77.39	\$100.83
4523005	TP-STL	Tall panel, Standard, Low Series	1950 x 610	\$59.23	\$75.79	\$244.75	\$147.11	\$196.54
4524005	TP-STLE	Tall panel, Standard, Low Series	2100 x 610	\$61.53	\$79.31	\$262.24	\$156.11	\$208.90
4525005	TP-STLE-P2	Tall panel, Standard, Low Series (extended to floor) Painted both faces	2100 x 610	N/A	N/A	\$404.64	N/A	N/A
4523006	TP-STH	Tall panel, Standard, High Series	2150 x 610	\$63.62	\$81.87	\$268.06	\$160.50	\$214.92
4524006	TP-STHE	Tall panel, Standard, High Series	2300 x 610	\$65.91	\$85.38	\$285.55	\$169.50	\$227.28
4525006	TP-STHE-P2	Tall panel, Standard, High Series (extended to floor) Painted both faces	2300 x 610	N/A	N/A	\$441.66	N/A	N/A
4540021	WP-LM	Wall panel, Low Series, Medium	595 x 320	\$22.84	\$25.55	\$56.83	\$36.97	\$45.34
4540022	WP-LS	Wall panel, Low Series, Short	300 x 320	\$19.22	\$20.61	\$36.43	\$26.37	\$30.79
4540041	WP-HM	Wall panel, High Series, Medium	795 x 320	\$25.30	\$28.90	\$70.43	\$44.15	\$55.20
4540042	WP-HS	Wall panel, High Series, Short	515 x 320	\$21.86	\$24.21	\$51.73	\$34.09	\$41.39
4540044	VP-WK	Vanity End Panel 680	680 x 500	\$28.54	\$33.34	\$84.28	\$53.73	\$68.34
4540045	VP-NK	Vanity End Panel 530	530 x 500	\$25.80	\$29.56	\$69.83	\$45.45	\$56.98

Filler Panels

Filler Panels are used to fill the gap between a cabinet and the wall. They are also used to make up for a wall that is not square. The panel can be used one of two ways. On its side it can be used to fill a gap of up to 16mm and can be scribed to an exact fit. On its edge it can be used (with a cleat behind it) to fill a gap of up to 70mm.

Product No.	Supplier Code	Description	Size Length x Height(mm)	Price commodity Woodgrain Matt doors	Price with Woodgrain sheen or Eurograin or Finegrain door	Price with 2 pack gloss painted door	Price with Createc Gloss Door	Price with Createc Woodgrain Gloss or Abstract Gloss Door
4710001	FF-ST	Floor Filler panel	720 x 70	\$17.57	\$18.34	\$25.36	\$21.36	\$23.91
4730005	TF-STL	Tall Filler Panel, Low Series	1950 x 70	\$22.44	\$24.48	\$43.11	\$32.66	\$39.42
4730006	TF-STH	Tall Filler Panel, High Series	2150 x 70	\$23.23	\$25.48	\$46.01	\$34.50	\$41.94
4745020	WF-LST	Wall Filler Panel, Low Series, Tall	720 x 70	\$17.57	\$18.34	\$25.36	\$21.36	\$23.91
4745021	WF-LSM	Wall Filler Panel, Low Series, Medium	595 x 70	\$17.08	\$17.71	\$23.55	\$20.21	\$22.33
4745022	WF-LSS	Wall Filler Panel, Low Series, Short	300 x 70	\$15.91	\$16.24	\$19.20	\$17.50	\$18.61
4745023	WF-LSMWB	Wall Filler Panel, Low Series, for wall	825 x 70	\$17.99	\$18.86	\$26.81	\$22.32	\$25.23
4745040	WF-HST	Wall Filler Panel, High Series, Tall	935 x 70	\$18.42	\$19.41	\$28.62	\$23.33	\$26.62
4745041	WF-HSM	Wall Filler Panel, High Series,	795 x 70	\$17.87	\$18.71	\$26.44	\$22.05	\$24.85
4745042	WF-HSS	Wall Filler Panel, High Series, Short	515 x 70	\$16.76	\$17.31	\$22.46	\$19.47	\$21.32
4745043	WF-HSMWB	Wall Filler Panel, High Series, for wall	1040 x 70	\$18.84	\$19.93	\$30.07	\$24.30	\$27.94
4745044	VF-WK	Vanity Filler 680	680 x 70	\$17.42	\$18.14	\$25.00	\$20.99	\$23.40
4745045	VF-NK	Vanity Filler 530	530 x 70	\$16.82	\$17.39	\$22.82	\$19.61	\$21.51

Bar Back Panels

Bar backs panels are used behind the breakfast bar section of the kitchen. They are manufactured 870mm high (to cater for a cupboard height of 720mm + leg height 145mm + 5mm scribe allowance). Maximum width is 2380mm for plain colours, 1190mm for Woodgrain.

The costing is calculated in increments of 100mm. To calculate price, multiply length required by lineal metre price rounded up to nearest 100mm (eg; a 670mm wide panel is costed at 700mm).

Product No.	Supplier Code	Description	Size Height (mm)	Price commodity Woodgrain Matt doors	Price with Woodgrain sheen or Eurograin or Finegrain door	Price with 2 pack gloss painted door	Price with Createc Gloss Door	Price with Createc Woodgrain Gloss or Abstract Gloss Door
4680998	BB-E	Bar Back Panel	720	\$42.88	\$52.97	\$139.96	\$96.14	\$126.56
4680999	BBP-E	Bar Back Panel	870	\$46.49	\$58.56	\$164.95	\$110.73	\$146.59

Kickboard Strips

Kickboard strips are installed in front of the plastic legs supporting the floor cabinets. Their purpose is purely aesthetic, providing a clean finish between the cabinets and kitchen floor. They are supplied in lengths of 1200mm and 2400mm with either edge strip or paint on both ends. Pre-glued loose edge strip is available on request (to be applied with iron) only for standard colour range (not used on painted kicks).

Product No.	Supplier Code	Description	Size Length x Height(mm)	Price commodity Woodgrain Matt doors	Price with Woodgrain sheen or Eurograin or Finegrain door	Price with 2 pack gloss painted door	Price with Createc Gloss Door	Price with Createc Woodgrain Gloss or Abstract Gloss Door
4885120	KB-SH	Kickboard half length	1200 x 150	\$20.98	\$23.47	\$47.16	\$36.31	\$44.43
4885240	KB-LO	Kickboard length	2400 x 150	\$26.97	\$31.92	\$79.12	\$57.61	\$73.66
4890999	KB-ES	Kickboard edge strip - price is per lineal metre	*** x 22	\$0.88	\$0.88	N/A	\$1.71	\$2.34
4885340	KB-SS	Kick Board Laminated Stainless Steel	2400 x 150	\$31.90				

Bulkheads

Bulkhead strips are installed on top of your wall cabinets providing a clean finish between the cabinets and the ceiling. They are supplied in lengths of any size and in heights of 100mm and 300mm to suit the high or low series. Material is 16mm MDF witch is easy to paint. The Bulkheads are calculated in increments of 100mm. To calculate price, multiply length required by lineal metre price rounded up to nearest 100mm (eg; a 670mm long bulkhead is costed at 700mm). **All bulkheads will be made with returns and fixing cleats as required**

Product No.	Supplier Code	Description	Size Length x Height(mm)	Price commodity Woodgrain Matt doors	Price with Woodgrain sheen or Eurograin or Finegrain door	Price with 2 pack gloss painted door	Price with Createc Gloss Door	Price with Createc Woodgrain Gloss or Abstract Gloss Door
4997100	BH-LS	Bulkhead in 16mm MDF	100	\$36.25				
4998300	BH-HS	Bulkhead in 16mm MDF	300	\$50.75				

Handles

Product No.	Supplier Code	Description	Stock Item	Size Between Holes (mm)	Price Unit	Price
5000096	100.01.096	Roma Handle, Metal, Bar, Stainless Steel 10mm		96	each	\$4.29
500128	100.01.128	Roma Handle, Metal, Bar, Stainless Steel 10mm		128	each	\$5.01
5000160	100.01.160	Roma Handle, Metal, Bar, Stainless Steel 10mm		160	each	\$6.44
5001128	120.01.128	Longreach Handle, Metal Bar, Stainless Steel 12mm		128	each	\$6.50
5002096	140.01.096	Kimberly Handle, Round D, Stainless steel		96	each	\$4.72
5002128	140.01.128	Kimberly Handle, Round D, Stainless steel		128	each	\$5.27
5002160	140.01.160	Kimberly Handle, Round D, Stainless steel		160	each	\$5.93
5002224	140.01.224	Kimberly Handle, Round D, Stainless steel		224	each	\$6.50
5003128	160.03.128	Moreton Handle, Slimline D, Polished Chrome		128	each	\$3.19
5004096	160.11.096	Moreton Handle, Slimline D, Brushed Nickel		96	each	\$2.54
5004128	160.11.128	Moreton Handle, Slimline D, Brushed Nickel		128	each	\$3.19
5004160	160.11.160	Moreton Handle, Slimline D, Brushed Nickel		160	each	\$4.16
5004224	160.11.224	Moreton Handle, Slimline D, Brushed Nickel		224	each	\$5.94
5005128	166.18.128	Busselton Handle, Square D, Brushed Aluminium		128	each	\$5.79
5006128	169.02.128	Kirwood Handle , Bow, Satin Nickel		128	each	\$4.94
5007128	170.19.128	Casino Handle, D, Dark Brushed Aluminium		128	each	\$6.50
5008128	171.02.128	Coobowie Handle, D, Satin Nickel		128	each	\$4.60
5009128	175.02.128	Bunbury Handle, Square D, Satin Nickel		128	each	\$6.18
5010064	176.02.064	Kadina Handle, Tapered , Satin Nickel		64	each	\$5.07
5010065	176.03.064	Kadina Handle, Tapered , Polished Chrome		64	each	\$5.07
5011160	179.19.160	Moonta Handle, D, Dark Brushed Aluminium		160	each	\$6.44
5012128	200.03.128	Rockhampton Handle, Slimline Bow, Polished		128	each	\$1.69
5013096	201.02.096	Atherton Handle, Flat Bow, Satin Nickel		96	each	\$1.95
5013097	201.06.096	Atherton Handle, Flat Bow, Satin Chrome		96	each	\$1.95
5014128	211.02.128	Cowell Handle, Bow, Satin Nickel		128	each	\$4.29
5015128	212.02.128	Tulka Handle, Bow, Satin Nickel		128	each	\$4.47
5016128	213.02.128	Wangary Handle, Bow, Satin Nickel		128	each	\$5.23
5017128	215.02.128	Noosa Handle, Thick Bow, Satin Nickel		128	each	\$3.51
5017129	215.06.128	Noosa Handle, Thick Bow, Satin Chrome		128	each	\$3.51
5018128	220.02.128	Bribie Handle, Bow, Satin Nickel		128	each	\$4.55
5019096	230.03.096	Robina Handle, Bow, Polished Chrome		96	each	\$5.08
5020096	240.11.096	Bunderberg Handle, Bow, Brushed Nickel		96	each	\$5.20
5020128	240.11.128	Bunderberg Handle, Bow, Brushed Nickel		128	each	\$5.85
5021128	245.02.128	Mackay Handle, Bow, Satin Nickel		128	each	\$5.53
5021129	245.06.128	Mackay Handle, Bow, Satin Chrome		128	each	\$5.53
5022096	265.02.096	MT Isa Handle, Bow, Satin Nickel		96	each	\$4.81
5022128	265.02.128	MT Isa Handle, Bow, Satin Nickel		128	each	\$5.33
5022160	265.02.160	MT Isa Handle, Bow, Satin Nickel		160	each	\$6.50
5023128	270.02.128	Killarney Handle, Bow, Satin Nickel		128	each	\$3.77
5023129	270.06.128	Killarney Handle, Bow, Satin Chrome		128	each	\$3.77
5150016	416.03.016	Sheringa Knob, Metal, Polished Chrome		16	each	\$2.67
5160016	417.02.016	Elliston Knob, Metal, Satin Nickel		16	each	\$2.82
5170018	418.01.018	Ceduna Knob, Metal, Stainless Steel		0	each	\$4.52
5180018	419.01.018	Esperance Knob, Metal, Stainless Steel		0	each	\$3.86
5190130	420.01.030	Emerald Knob, Metal, Stainless steel		0	each	\$6.50
5190230	420.02.030	Emerald Knob, Metal, Satin Nickel		0	each	\$4.29
5190330	420.03.030	Emerald Knob, Metal, Polished Chrome		0	each	\$4.29
5200042	431.03.042	Torbay Knob, Metal, Polished Chrome		0	each	\$3.28
5210096	433.02.096	Albany Handle, Recessed, Satin Nickel 107 x 29 x		0	each	\$5.82
5220035	434.02.035	Milpara Handle, Recessed, Satin Nickel 35 x 35		0	each	\$3.82

Refer to www.barchie.com.au for handle design

Sinks and Sink Mixers

Product No.	Supplier Code	Description	Size	Price Unit	Price
			length x width x height (mm)		
5850100	567.30.100	Double Bowl Sink Stainless Steel RH Drainer	1200 x 500 x 180	each	\$194.78
5850000	567.30.000	Double Bowl Sink Stainless Steel LH Drainer	1200 x 500 x 180	each	\$194.78
5850900	567.34.900	Accessory Pack to Suit Double bowl Sink, Includes Chopping board, Plastic Basket, SS Wire Basket		each	\$61.07
5850110	567.30.110	1 & 3/4 Bowl Sink Stainless Steel RH Drainer	1080 x 480 x 170	each	\$167.18
5850010	567.30.010	1 & 3/4 Bowl Sink Stainless Steel LH Drainer	1080 x 480 x 170	each	\$167.18
5850901	567.34.901	Accessory Pack to Suit 1 & 3/4 bowl Sink, Includes Chopping board, Plastic Basket, SS Wire Basket		each	\$64.79
5850106	567.33.106	Under mount Double Bowl Sink Stainless Steel	780 x 445 x 180	each	\$215.05
5850116	567.33.116	Under mount 1 & 3/4 Bowl Sink Stainless Steel	800 x 490 190/170	each	\$194.96
5850120	567.30.120	Laundry Tub	600 x 500 x 240	each	\$110.68
5850980	567.34.980	Bypass Kit for Laundry Tub		each	\$16.74
5850200	566.58.200	Mixer Tap for Kitchen Sinks and Laundry tub	264 x 40 x 127	each	\$75.10
5850220	566.58.220	Gooseneck Tap For Kitchen Sinks and Laundry Tub	187 x 40 x 344	each	\$145.56
5850230	566.58.230	Mixer Tower with Flexible extension	220 x 30 x 709	each	\$442.04

Appliances

Product No.	Supplier Code	Description	Size	Price Unit	Price
			Height x Length x Depth (mm)		
5903000	537.03.000	Milano Oven, 4 Function, 60cm, SS	600 x 600 x 520	each	\$620.98
5903020	537.03.020	Milano Double Wall oven, 60cm, SS	900 x 600 x 520	each	\$1,462.11
5907003	539.07.003	Bassano Freestanding Cooker, 90cm, SS	900-1050 x 900 x 600	each	\$1,931.41
5903510	537.03.510	Milano Gas Cook top 60cm. SS	45 x 580 x 510	each	\$256.58
5903543	537.03.543	Milano Gas Cook top, 5 Burner, 90cm, SS	45 x 880 x 510	each	\$721.92
5903500	537.03.500	Milano Electric Cook top, 60cm, SS	45 x 580 x 510	each	\$323.62
5903550	537.03.550	Milano Ceramic Cook top, 60cm, Black	45 x 580 x 510	each	\$577.60
5903002	537.83.002	Milano Range hood 60cm, SS	175 x 598 x 280	each	\$158.86
5903003	539.82.022	Hafele Recirculating Range hood	175 x 598 x 280	each	\$215.90
5903004	500.30.985	Charcoal Filter for recirculating Range hood	N/A	each	\$51.99
5900312	500.30.312	Milano Tapered Canopy Range hood, 60cm, SS	720 x 600 x 480	each	\$219.87
5902203	537.82.203	Milano Tapered Canopy Range hood, 90cm, SS	720 x 900 x 480	each	\$288.11
5902223	537.82.223	Milano Flat Glass Canopy Range hood, 90cm, SS	720 x 900 x 480	each	\$274.22
5902213	537.82.213	Milano Curved Glass Canopy Range hood, 90cm, SS	720 x 900 x 480	each	\$368.25
5902233	537.82.233	Milano Box Canopy Range hood, 90cm, SS	720 x 900 x 480	each	\$397.14
5913000	537.23.000	Milano Dishwasher, 60cm, SS	870 x 600 x 560	each	\$545.17

Cabinet Accessories:

Product No.	Supplier Code	Description	Size	Price Unit	Price
Lazy Susan					
5500820	541.45.837	Lazy Susan, 3/4, for use in corner cabinets		set	\$116.38
Lemans Unit					
5500821	541.33.280	LeMans Set Corner Fitting White 450 R/H		set	\$490.35
5500822	541.33.281	LeMans Set Corner Fitting White 450 L/H		set	\$490.35
5500823	541.33.282	LeMans Set Corner Fitting White 500 R/H		set	\$508.68
5500824	541.33.283	LeMans Set Corner Fitting White 500 L/H		set	\$508.68
Pull Out Pantry					
			Width (mm)		
5501300	546.59.831	Full extension White pullout pantry, 5 bsks	300	set	\$812.99
5501400	546.59.833	Full extension White pullout pantry, 5 bsks	400	set	\$776.95
Cutlery Insert					
			Depth (mm)		
5505400	556.62.710	Cutlery tray for 400mm wide cabinet, Shallow depth	380	each	\$9.59
5505450	556.62.729	Cutlery tray for 450mm wide cabinet, Shallow depth	380	each	\$10.48
5505500	556.62.738	Cutlery tray for 500mm wide cabinet, Shallow depth	380	each	\$11.31
5505550	556.62.694	Cutlery tray for 550mm wide cabinet, Shallow depth	380	each	\$11.66
5505600	556.62.747	Cutlery tray for 600mm wide cabinet, Shallow depth	380	each	\$12.45
5506400	556.62.774	Cutlery tray for 400mm wide cabinet, Standard depth	480	each	\$9.91
5506450	556.62.783	Cutlery tray for 450mm wide cabinet, Standard depth	480	each	\$10.84
5506500	556.62.792	Cutlery tray for 500mm wide cabinet, Standard depth	480	each	\$11.91
5506550	556.62.809	Cutlery tray for 550mm wide cabinet, Standard depth	480	each	\$10.84
5506600	556.62.818	Cutlery tray for 600mm wide cabinet, Standard depth	480	each	\$13.09
Towel Rail					
			Length (mm)		
5510999	510.54.921	2 arm silver anodised tea-towel rail 430mm	480	each	\$17.60
Bins					
			Width (mm)		
5520001	503.06.712	Double Bin, White, Pull out, Mounted Behind Doors 2 x 20L	400	set	\$60.52
5521001	503.06.722	Double Bin, White, Pull out, Door Mount 2 x 20L	400	set	\$64.65
Installation Consumables					
5750030	2-242-130	Screws, 4.5 x 30mm, for joining cabinets, 50/bag		bag	\$3.90
5750060	2-242-160	Screws, 4.5 x 60mm, for fixing cabinets to walls, 50/bag		bag	\$4.55
5760001	045.04.705	White Caps, 52 per bag		bag	\$3.25
5760002	14.03.0030	White round foam buffer, 100/pack		bag	\$11.70